

“Improving facilities. It’s our City too, help us to make it better for everyone”

Eamon Hartley

Appendices



Appendix 1

NEW CO-ORDINATION MECHANISMS

The Galway City Development Board proposes the establishment of twelve new co-ordinating groups charged with overseeing the implementation of the various strategies and plans proposed in this Strategy. The Board may change the membership of the Co-ordinating Mechanisms as needs arise over time. Each Co-ordinating Mechanism will convene its first meeting before the end of June 2002 with September 2002 identified as the deadline for Board ratification of respective Work Plans. The membership of these groups and the further elaboration of the issues identified for their consideration is presented in Appendix 1. It is noteworthy that additional actions and issues have been assigned for consideration to individual agencies and sectors, outlined in greater detail in Appendices II and III.

- **Arts & Culture Group**
- **Community Development Group**
- **Economic Development Group**
- **Health Forum**
- **Integrated Transportation Co-ordinating Group**
- **Regional Group**
- **Social Inclusion Group**
- **Spatial Planning Group**
- **Sports & Recreation Forum**
- **Strategic Learning Network**
- **Tourism Group**
- **The Natural Environment and Waterways Group**

ARTS & CULTURE GROUP

Membership

Galway City Council is Lead Partner, the Community & Voluntary Sector, the Business Sector, The Arts Council, The Heritage Council, the Department of Arts, Heritage, Gaeltacht & the Islands, the Department of Education & Science, Galway Local Authorities Library Service, the Irish Film Board, Údarás na Gaeltachta, Ireland West Tourism, NUI, Galway, Galway Mayo Institute of Technology, the Media, Foras na Gaeilge and the City of Galway Vocational Education Committee



Work Brief

- (a) Arts Plan
- (b) Audit of Arts Audiences & Participation
- (c) Film Development
- (d) School of Music
- (e) Gaeltacht Communities Strategy

Issues Identified

Cultural Infrastructure

- Produce a strategy aimed at developing the City's cultural infrastructure, having regard to an analysis of needs and consideration of the following:
 - A permanent outdoor performance space
 - Rehearsal and storage space
 - A City Arts Gallery
 - A Galway Writers Centre
 - Financial supports to artists and art organisations
 - More public art through the Per Cent for Arts Scheme
 - A City Museum
 - A School of Performing Arts
 - A School of Music
- Liaise with the Regional Museum service through the Regional Group to facilitate:
 - (i) The rotation of artefacts between different museums in the region
 - (ii) The sharing of technical staff

The Arts

- Maximise the potential of the arts to impact on social and economic aspects of life in the city through:
 - Development of clusters of cultural activity in local communities
 - Outreach Programmes
 - A centralised information booking system
 - Further develop clusters of arts and culture in terms of:
 - (i) production, (ii) performance and (iii) services
 - Formal and informal networks of artists, agencies and communities.
- Further develop film and television production and services.
- An Archive Service

Equality of Access

- Develop strategies which support equality of access for all to cultural activities as active and passive participants addressing issues such as:
 - Pricing policy
 - Accessibility and location of venues
 - Establishing linkages between agencies, artists and marginalised groups including travellers and other ethnic groups.

Strategies/Plans/Feasibility Studies/Reports to be produced

- (i) City Arts Plan
- (ii) Strategy aimed at developing the City's arts and cultural infrastructure
- (iii) Strategies which support equality of access
- (iv) Strategies to support and foster Gaelic culture and traditions
- (v) Feasibility Study for the establishment of a Centre for Gaelic and Celtic Culture
- (vi) Audit of Arts Audiences
- (vii) Feasibility Study of the need for a School of Performing Arts in the City
- (viii) Feasibility Study of the need for a School of Music in the City

COMMUNITY DEVELOPMENT GROUP

Membership

Galway City Council is Lead Partner, the Community & Voluntary Sector, Political Parties, Galway City Partnership, City of Galway Vocational Education Committee, the Education Sector, the Media, the Department of Education & Science, An Garda Síochána, Churches and Galway Mayo Institute of Technology

Work brief

- (a) Assistance to Community Groups
- (b) Promotion of 'Community' and Participation
- (c) Promotion of Voluntarism
- (d) Charter of Participation

Issues Identified

Supporting the Community and Voluntary Sector

- Establish a resource centre for Community and Voluntary Groups in a City centre location
- Establish a festival of community celebration
- Develop a centralised database on the level of Community and Voluntary supports
- Facilitate local involvement in the management of community and recreational facilities
- Establish a Mayoral awards scheme for volunteers
- Encourage the Business sector to support an annual volunteer week
- Annual reports of agencies and organisations to highlight advances made in relation to participative decision-making.
- Baseline information on voluntarism to be established employing the means suggested below:
 - Agencies to include a question regarding the number of participants on any application forms used by Community & Voluntary groups
 - Call for the inclusion of a census question on voluntarism
 - Explore the possibility of undertaking a simple survey

Encouraging Citizenship

- Prepare a Voter Participation Strategy
- Explore the idea of promoting 'Corporate Citizenship'

Youth Issues

- Establish a Forum for young people
- Establish a Voluntary Youth Council in line with new legislation



Strategies/Plans/Feasibility Studies/Reports to be produced

- (i) Voter Participation Strategy
- (ii) Voluntarism Strategy
- (iii) Strategy to encourage Civic Spirit
- (iv) Develop a Charter for Participation
- (v) Develop models of working to ensure meaningful consultation

ECONOMIC DEVELOPMENT GROUP

Membership

Enterprise Ireland is Lead Partner, Galway City Council, Galway County & City Enterprise Board, the Business Sector, IDA Ireland, Ireland West Tourism, Galway City Partnership, City of Galway Vocational Education Committee, the Community & Voluntary Sector, FÁS, the Department of Education & Science, NUI, Galway, Galway Mayo Institute of Technology, Údarás na Gaeltachta, the Trade Union Sector, the Western Development Commission, the Department of Social, Community & Family Affairs and the Department of Arts, Heritage, Gaeltacht and the Islands

Work Brief

- (i) Strategic Research & Development
- (ii) Marketing
- (iii) Enterprise Development
- (iv) Foreign Direct Investment
- (v) Telecommunications and Utilities Infrastructure

Issues Identified

Economic Development

- Agree and develop measures to further promote the economic development of Galway City
- Increase the number of jobs supported by inward investment as per IDA Ireland objectives
- Source and attract new foreign investment and skilled workers to Galway with emphasis on jobs attracting incomes greater than €30K at 2001 levels
- Co-ordinate and integrate plans across agencies to ensure a common approach

- Promote the development of a skilled and globally oriented work force fully utilising the Strategic Learning Network
- Foster local, indigenous “Start-Up Clusters”, aimed at facilitating further enterprise development
- Develop strategic business sectors which facilitate innovation and entrepreneurship
- Co-ordinate skills training, support and mentoring to promote and facilitate people in start-ups, small businesses and Community businesses
- Support a programme to promote Enterprise culture at second and third level education
- Establish per annum targets in each of the following key result areas:
 - Per target group, establish the number who:
 - (a) completed enterprise courses
 - (b) engaged in specific activities designed to induce and stimulate entrepreneurial activity
 - (c) progressed to enterprise development i.e. R&D stage, incubation unit, enterprise campus or stand-alone unit
 - Total number of companies in the City
 - Total employment in City based companies across companies
 - Sectoral breakdown
 - Percentage of new jobs created with index linked salaries of more than €31,743 (2002 levels)
 - Number of enterprise related company training days across all Galway based industry
 - Number of Small and Medium Enterprises who have increased export sales
 - Number of new incubation spaces
 - Level of public and private investment

Economic Infrastructure

- Implementation of the Telecommunications Infrastructure Strategy.
- The energy capacity of the City needs to be increased to meet the long term residential and industrial needs of the City
- Ensure an attractive quality of life - maintain and expand Galway's healthy natural environment, strong social/public services including education system, health, housing, recreation, cultural activities combined with air and water quality
- Ensure adequate zoned land to:
 - (i) facilitate the balanced development of business parks across the City
 - (ii) enable the further development of start up incubation units

Strategic Learning

- Foster strong inter-linkages with the Strategic Learning Network to address each of the following amongst others:
 - Assess learning needs.
 - Retrain workers displaced from jobs
 - Undertake a skills audit
 - Provide training for public service employees
- Establish per annum targets in each of the following key result areas:
 - Number of entrants to the Young Scientists Exhibition
 - Percentage of second level students undertaking science and technical subjects
 - Numbers of: (i) primary schools and (ii) primary school students involved in Science

Research and Development

- Increase R&D and aim to achieve targets in key result areas on a per annum basis.
- Utilise schools and research centres to explore new ideas and technologies for transfer to local business.
- Establish per annum targets in each of the following key result areas:
 - Total grant allocation and R&D expenditure across each of the following sectors:
 - (i) industry, (ii) education and (iii) government
 - Number of campus companies

Promoting Equality

- Develop targeted responses to Traveller employment needs, bearing in mind their culture and examine employment potential through the FÁS Social Economy Programme
- Build on the Adult Literacy Service and promote with employers and develop in-house training
- Undertake research and develop appropriate indicators in relation to the:
 - (i) quality, (ii) payment and (iii) benefits of jobs vis à vis national averages
- Encourage employers to engage in 'equality auditing' of recruitment practices through the development of a pilot project
- Examine opportunities for part-time and atypical job opportunities for people who are unable to avail of full time employment
- Aim to implement the recommendations of 'A Matter of Rights', the National Disability Authority Strategic Plan 2001 - 2003

Strategies/Plans/Feasibility Studies/Reports to be produced

- (i) Enterprise Development Strategy
- (ii) Marketing Plan
- (iii) Strategy to develop telecommunications Infrastructure



HEALTH FORUM

Membership

Western Health Board is Lead Partner, Galway City Council, An Garda Síochána, Galway City Partnership, City of Galway Vocational Education Committee, the Community & Voluntary Sector, the Education Sector, the Business Sector and the Trade Union Sector

Work Brief

- (a) Oversee implementation of a Health Promotion Strategy
- (b) 'Healthy Living' projects
- (c) Improve inter-agency linkages
- (d) Review adequacy of the Community Health Service

Issues Identified

Health Services

- Decrease the level of dependence on Dublin based health services to be achieved over the lifetime of this Strategy in areas such as heart/brain surgery, cancer care, care of people with a disability, rehabilitation of the ill/injured, trauma care, diving and decompression medicine and others.
- Consider the needs of older people as a specific target group in terms of improving health services.
- Consider the "Alternative to Violence" Programme

Health Promotion

- Develop a Strategy for 'Galway as a Healthy City' to address each of the following areas:
 - (i) the promotion of daily commuting via walking and cycling
 - (ii) monitoring the number of trips to work/school by foot or by bicycle
- Health Promotion Week in the City
- Health Proof the City Development Plan

Strategies/Plans/Feasibility Studies/Reports to be produced

- (i) Galway as a Healthy City Strategy
- (ii) Medical Services Strategy
- (iii) Health Promotion Strategy
- (iv) Health Proofing the City Development Plan
- (v) Review of the Community Health Service

INTEGRATED TRANSPORTATION CO-ORDINATING GROUP

Membership

Galway City Council is Lead Partner, Galway County Council, Bus Éireann, Iarnród Éireann, Private Bus Operators, Ireland West Tourism, Galway Airport Company Ltd., An Garda Síochána, the Business Sector, the Community and Voluntary Sector, the National Roads Authority, the Department of Public Enterprise, the Department of the Environment & Local Government, Representatives of Taxi and Hackney Operators, IDA-Ireland, the Education Sector and the National Safety Council

Work Brief

- (a) Oversee the implementation of an integrated transport strategy

Issues Identified

Co-ordinated Transportation

- Establish an Integrated Transportation Group
- Make 'Car Free Day' an annual event adopting an inter-agency approach in its planning and implementation
- Implement 'Child-Friendly City' Strategy
- Annual monitoring regime to be put in place to monitor progress on implementation

Bus

- Improve City bus service
- Develop a policy for the introduction of Quality Bus Corridors
- Introduce 'park and ride' facilities
- Improve bus parking facilities
- Improve facilities for tourist buses
- Bus services to be within a maximum safe 10 minute walking distance of each house, with a high frequency service including a night service

Roads and Traffic Management

- Develop road network into and within Galway City addressing the following routes in particular:
 - Galway/Dublin
 - Cork/Shannon/Galway/Sligo
 - Upgrade the City street and road network
 - Upgrade the network serving Connemara
 - Develop the new outer by-pass
- Prepare and implement a traffic management plan for the City to address:
 - Vehicular traffic reduction as a percentage of the population
 - Congestion in the City
 - The feasibility of co-ordinating the opening hours of schools and places of work
 - Parking
 - Signposting
 - Car Park Information Systems
 - Traffic Signal Integration
 - Urban Traffic Controls
 - Traffic-calming measures
 - Appropriate delivery arrangements
 - The promotion of alternative transport modes within and to the City
 - The promotion of car-pooling
 - Options such as the "Walking Bus" concept

Road Safety

- Address the following road safety issues within the context of the proposed traffic management plan for the City:
 - Road safety promotion
 - The number of road collisions
 - Safety issues associated with design
 - The possible reduction of the speed limit in residential areas and the City Centre to 20 m.p.h.
 - Road accidents in accordance with the national targets

Rail

- Upgrade the Rail Service
- Increase use of the rail network for freight handling
- Improve the public transport facilities in Ceannt Station ensuring integration with taxi and bus services
- Explore the feasibility of providing a Cork/Shannon/Galway/Sligo rail link
- Explore the feasibility of a light rail service into and around the City combined with the potential of a commuter rail link to Oranmore
- Improve Galway/Dublin rail service to include upgrading of:
 - Rolling Stock
 - Schedule of Service
 - Journey Time
 - Service Frequency
 - Quality of Service

Taxis & Hackneys

- Support the development of a quality taxi and hackney service in the city
- Provide support infrastructure for taxis and hackneys including taxi ranks and facilities adjacent to public transport infrastructure particularly at Ceannt Station
- Encourage taxi-sharing arrangements

Pedestrians

- Develop a city-wide safe walking infrastructure for all
- Secure pedestrian crossing facilities near roundabouts and on main roads in accordance with established criteria
- Develop safe walkways with the objective of linking streets
- Explore the feasibility of having a sustainable integrated transport strategy for the City based on the following hierarchy: 1. Pedestrians, 2. Cycling, 3. Public transport, 4. Private motor car

Cycling

- Develop a City-wide safe cycling infrastructure
- Provide cycle parking facilities at 10 locations, identified as strategic



Dock & Ferry Services

- Develop Galway Harbour to its full potential
- Improve Ferry access
- Develop cruise tourist market
- Increase cruise business
- Increase port traffic
- Examine the feasibility of developing access to the City by water transport

Disability Friendly Access

- Develop Galway as a 'disability friendly' City
- Further develop transport modes that are accessible to people with a disability
- Ensure that road infrastructure accommodates people with a disability
- All public transport to be accessible for all by 2010
- Planning to take account of needs of people with a disability
- Progress an Access Audit of the City
- New infrastructure works to comply with Comhairle/National Disability Authority guidelines

Strategies/Plans/Feasibility Studies/Reports to be produced

- (i) Develop an Integrated Sustainable Transportation Strategy
- (ii) Traffic Management Plan
- (iii) Plan for upgrading facilities and services at Galway Airport
- (iv) Galway Harbour Plan
- (v) Study on the feasibility of a light rail service, incorporating a commuter link to Oranmore

REGIONAL GROUP

Membership

West Regional Authority is Lead Partner, the Galway City Development Board, the Galway County Development Board, the Mayo County Development Board, the Roscommon County Development Board, the Western Development Commission and the Border, Midland and Western Regional Assembly

Work Brief

- (a) Co-ordinate Regional Mechanisms

Issues Identified

- To co-ordinate the preparation of Regional Planning Guidelines
- To address Regional issues including: transportation, telecommunications, utility provision, employment, third level education combined with sports and cultural facilities
- In co-operation with the Arts & Culture Group the Regional Group will liaise with the Regional Museum Service to facilitate:
 - (i) the rotation of artefacts between different museums
 - (ii) sharing of technical staff

Strategies/Plans/Feasibility Studies/Reports to be produced

- Produce a regional strategy addressing the key issues impacting on the region.

SOCIAL INCLUSION GROUP

Membership

Galway City Council and Galway City Partnership are Lead Partners, Galway City Vocational Education Committee, the Western Health Board, the City & County Childcare Committee, the Department of Social, Community and Family Affairs, FÁS, the Community & Voluntary Sector, the Business Sector, the Trade Union Sector, An Garda Síochána, the Churches, the Probation and Welfare Service and Galway Mayo Institute of Technology

Work Brief

- (a) Equality Issues
- (b) Anti-Racism
- (c) Anti-Social Behaviour
- (d) Employment and Training
- (e) Access to Services
- (f) Access

Issues Identified

Work, Progression and Income

- Develop indicators regarding income levels in line with National Anti-Poverty Strategy targets, using Department of Social, Community and Family Affairs and National Household Survey statistics
- Establish City based information on people seeking employment who are not currently on the 'Live Register'
- Consider the value of identifying all people throughout the City who want to take up work between now and 2003
- Explore the idea of developing a strategy of full employment (addressing part-time employment) for Galway City by December 2004 through a FÁS directed mentoring programme
- Consider the following proposed Key Outputs/Outcomes: 40% of unemployed residents (who want to work) within the City to be working by December 2003 and 80% of the balance of unemployed residents (who want to work) within the City to be working by December 2004
- Further co-ordinate models of supported interventions for low-skilled/under-employed and those with specific needs, who are in danger of becoming unemployed
- Employers to commit to up-skilling members of their workforce to allow progression from lower skill to higher skill jobs
- Development of indicators in relation to progression from lower-paid to higher paid work

Promoting Equality and Interculturalism

- Develop programmes which address the needs of the socially excluded
- Promote anti-racism and raise equality awareness and education through initiatives in schools, communities, training centres, workplaces, and State Agencies.
- Recognise the cultural diversity of ethnic groups.
- Develop policies of equal opportunities incorporating an anti-racism policy statement, with appropriate monitoring regimes in line with equality legislation.
- Examine the feasibility of establishing a Traveller Interpretative Centre.
- Develop mechanisms to measure attitudes to racism.
- Consider the feasibility of developing and implementing Local Equality and Anti Racism Strategies.
- Examine the promotion of all tenets of interculturalism in the City adopting a cross-sectoral approach
- Provide education for local people on new cultures coming into the City
- Include cities from developing countries in twinning activities
- Explore the possibility of private sector incentives designed to create a more equitable society
- Improve access to buildings, public places and streets for people with a disability through enforcement of the existing Building Regulations
- Support the introduction of 'Access Certification'

Strategies/Plans/Feasibility Studies/Reports to be produced

- (i) Employment Plan for marginalised groups
- (ii) Local Equality and Anti-Racism Charter
- (iii) Anti-Social Behaviour Strategy
- (iv) Access Audit
- (v) Communication Strategies
- (vi) Develop mechanisms to measure attitudes to racism

SPATIAL PLANNING GROUP

Membership

Galway City Council is Lead Partner, the Western Health Board, An Garda Síochána, the Education Sector, Transportation Interests and the Community & Voluntary Sector

Work Brief

- (a) Oversee the provision of infrastructure as identified by the National Spatial Strategy
- (b) Oversee the planning and implementation of integrated community facilities

Issues Identified

- Timely planning and provision of community facilities
- Zoning of large tracts of land should include designation for community facilities
- Promotion of innovative design via architectural competitions, award schemes and 'model' projects

Strategies/Plans/Feasibility Studies/Reports to be produced

- (i) Design Guidelines

SPORTS & RECREATION FORUM

Membership

City of Galway Vocational Education Committee is the Lead Partner, Galway City Council, Galway City Partnership, the Western Health Board, Community & Voluntary Sector, An Garda Síochána, NUI, Galway, Galway Mayo Institute of Technology, Údarás na Gaeltachta, the Business Sector and the Irish Sports Council

Work Brief

- (a) Develop a Directory of Sports/Recreation/Amenity services and facilities
- (b) Develop a Sports and Recreation Strategy

Issues Identified

Sports and Recreation Forum

- Establish a Forum to advance a sports and recreation strategy focussing on:
 - Youth e.g. capitalise on summer camps
 - Health implications from greater participation in sport and recreation
 - Supports such as trained, well-informed voluntary and professional personnel
 - Opportunities in relation to sharing of facilities
 - The needs of various target groups e.g. older people and marginalised groups etc.
 - The identification of barriers to participation
 - The development of formal input structures; thereby enabling people of all ages to participate in the creation and management of community facilities

Sports Development

- Appoint a Local Sports Development Officer and explore the possibility of appointing additional Officers
- Further develop the Regional Sports Centre
- Further develop outdoor and indoor training and sports medicine facilities
- Develop skate boarding facilities
- Investigate the high cost of sports insurance

Strategies/Plans/Feasibility Studies/Reports to be produced

- (i) Sports & Recreation Services Directory
- (ii) Sports and Recreation Strategy



STRATEGIC LEARNING NETWORK

Membership

City of Galway VEC is Lead Partner, FÁS, NUI, Galway, Galway Mayo Institute of Technology, Galway City Partnership, the Community & Voluntary Sector, Galway City Council, the Business Sector, the Trade Union Sector, the Galway Education Centre, the Department of Education & Science, the Education Sector and the Churches

Work Brief

(a) Learning Strategy

Issues Identified

Life-long Learning

- Develop and implement a range of initiatives across key indicators intended to develop Galway as a knowledge driven 'Learning City' with the best continuously educated and trained workforce in the country
- Link the Strategic Learning Network with the Economic Development Group to produce a report on needs and evaluate its findings
- Publish a directory of the Learning, Training and Education opportunities in Galway City
- Develop indicators to gauge the development of Galway as a 'Learning City'
- Develop a strategy to provide learning opportunities on a networked, co-operative basis thereby enabling people to enjoy full and active participation in the economic, civic, political and cultural life of the City. This strategy will address each of the following:
 - The establishment of 'Galway Learning Week' as a series of school, street and work-based events designed to focus attention on the importance of learning for work and life (piloted Autumn 2001).
 - The development of new models of Learning responsive to people's needs involving the public and private sector.
 - The analysis of access and affordability issues through the development of new models with pilot phase of these models to commence by 2003.

Learning Organisations

- 'Learning Organisations' to facilitate continuing education, re-training and skills development for all employees by:
 - Developing a culture which recognises talent and provides opportunities for continuing education and training
 - Targeting 'early school leavers' in employment
- Retrain workers displaced from jobs
- Two "Learning Organisations" to be piloted in January 2003 (one from the public sector and one from the private sector). These organisations will aim to achieve the FÁS Excellence Through People Award
- Public Sector organisations to strive to achieve spending based on 3% of payroll cost on training and development

Access to and Uptake of Educational Opportunities

- Encourage participation and address barriers to participation in accessing third level and further education and training
- Ensure flexible entry requirements to allow access for mature students and students without Leaving Certificate qualification, while maintaining standards
- Promote increased uptake of programmes aimed at early school leavers
- Ensure a range of options/incentives to allow a ladder of progression for students/trainees
- Evaluate the effectiveness of early school leaving interventions in the City

Literacy

- Raise awareness of literacy services
- Develop targets which will serve to eliminate illiteracy
- Develop a referral system from State Agencies and employers
- Encourage voluntarism to address literacy issues
- Develop targeted initiatives to improve the levels of literacy among students in schools
- Benchmark literacy levels
- Develop employment based literacy training

Information Communications Technology (ICT)

- Make available on-going training to all workers and managers in both public and private sector to increase competencies and keep abreast of new ideas, markets and technologies
- Members of target groups to obtain an agreed level of ICT training. Following an initial pilot phase, this initiative will be expanded
- Strategic Learning Network to set targets in relation to ICT training
- Directory of Educational, Training and Learning Opportunities in Galway City

Community Education

- Develop a Community Education Centre
- Map and identify the current level and range of community education in the City and further develop on the basis of these findings.

Strategies/Plans/Feasibility Studies/Reports to be produced

- (i) Learning Strategy
- (ii) Learning, Training and Educational Opportunities Directory
- (iii) Literacy Plan
- (iv) Science and Technology Programme for Primary Schools
- (v) Community Education Strategy
- (vi) Access Strategy - Third Level
- (vii) Strategies to tackle early school leaving



THE NATURAL ENVIRONMENT AND WATERWAYS GROUP

Membership

Galway City Council to be Lead Partner, Western Regional Fisheries, Lough Corrib Navigation Trustees, Office of Public Works, Dúchas, Galway County Council, Galway Harbour Company, The Marine Institute, Ireland West Tourism, the Community & Voluntary Sector, the Education Sector, the Department of the Marine and Natural Resources and the Border, Midland and Western Regional Assembly

Work Brief

- (a) Undertake a needs assessment and develop strategies for the revitalisation of the City's Waterways
- (b) Develop a 'Waterways Strategy'
- (c) Co-ordinate the activities of the groups involved to enhance the natural environment of the City

Issues Identified

- Develop strategies for the revitalisation of the City's waterways, shore and bay areas
- The Natural Environment

Strategies/Plans/Feasibility Studies/Reports to be produced

- (i) Waterways Strategy
- (ii) Natural Environment Plan

TOURISM GROUP

Membership

Ireland West Tourism/Bord Fáilte are joint Lead Partners, Galway City Council, Enterprise Ireland, the Business Sector, Galway County and City Enterprise Board, NUI, Galway, Galway Mayo Institute of Technology, Tourism Ireland, Galway Tourism 2000, Aer Rianta Shannon, Shannon Development, Galway Airport Company Ltd., Galway Harbour Company, the Western Development Commission, Bus Éireann, Iarnród Éireann, the Community & Voluntary Sector, Údarás na Gaeltachta, Galway County Council, An Garda Síochána, Western Regional Fisheries Board and the Irish Tourist Industry Confederation

Work Brief

- (a) Develop and implement a sustainable Tourism Strategy
- (b) Prepare an integrated Tourism Marketing Strategy
- (c) Develop the tourism infrastructure and attractions which are accessible to all

Issues Identified

Tourism Infrastructure and Resources

- Develop the resources, attractions, accommodation and access needed by visitors to Galway
- Develop an Interactive Science Museum
- Explore the feasibility of a Forestry Interpretative Centre.
- Develop Galway's Waterways as a resource including: a marina, sea shore/beach areas and canals
- Implement recommendations of Brady Shipman and Martin Report
- Support the development of events and festivals in off-peak seasons

Tourism Potential

- Commission a report on the potential of Eco-Tourism for Galway City
- Develop a Marine Tourism Strategy for Galway
- Examine the potential of developing a Tourism Market founded on culture
- Develop new markets such as the promotion of Galway as a disability friendly destination
- Establish a base-line measurement of the number of people with a disability who visit the City on a year round basis and increase the number of tourism products on offer to people with a disability

Tourism Promotion

- Increase the number of 'high expenditure' visitors to the City, with emphasis on the off-peak period
- Marketing Strategy

Strategies/Plans/Feasibility Studies/Reports to be produced

- (i) Sustainable Tourism Strategy
- (ii) Eco-Tourism Strategy
- (iii) Integrated Tourism Marketing Strategy
- (iv) Water-Based Tourism Strategy

Appendix II

ACTIONS APPORTIONED TO AGENCIES

AER RIANTA SHANNON

Issues Identified

Participation in the Tourism Group

AN GARDA SÍOCHÁNA

Issues Identified

Participation in the Health Forum, Integrated Transportation Co-ordinating Group, Spatial Planning Group, Community Development Group, Social Inclusion Group, Sports & Recreation Forum and the Tourism Group.

In partnership with Galway City Council, Western Health Board, Community & Voluntary Sector and the Business Sector:

- Develop and implement a Strategy for a Safe City to reduce crime, increase safety and decrease fear of crime to include:
 - 'Designing out crime' via improved building/environment design, public lighting illumination of dark / back alleys
 - Development of meaningful benchmark statistics for crime and public order offences
 - Development of responsive and appropriate public order strategies incorporating the support and involvement of local communities
- Consider the installation of CCTV throughout the City
- Contribute to improving road safety and the reduction of casualties
- Providing response to emergencies
- Explore the feasibility of regulating businesses which operate after midnight and are not currently regulated
- Provide help and support to victims of crime

In partnership with the Western Health Board, Community & Voluntary Sector, City of Galway Vocational Education Committee, Education Sector, and the Probation and Welfare Service:

- Develop programmes to address the causes of crime (e.g. alcohol and drugs) and domestic abuse which:
 - Encourage healthy lifestyles
 - Support the formation of inter-agency partnerships

In partnership with the Western Health Board, Galway City Council, Community & Voluntary Sector, City of Galway Vocational Education Committee, the Probation and Welfare Service, Galway City Partnership and the Education Sector:

- Develop and implement a co-operative inter-agency plan
 - To address anti-social behaviour
 - Support early interventions for youth at risk
 - Establish additional Special Justice Projects

Note: Care is necessary to ensure that crime is not only attributed to particular target groups



BORD FÁILTE

Issues Identified

Participation as Joint Lead Partner in the Tourism Group

BORDER, MIDLAND AND WESTERN REGIONAL ASSEMBLY

Issues Identified

Participation in the Regional Group and the Natural Environment and Waterways Group

BUS ÉIREANN

Issues Identified

Participation in the Integrated Transportation Co-Ordinating Group and the Tourism Group

CITY OF GALWAY VOCATIONAL EDUCATION COMMITTEE

Issues Identified

Participation as Lead Partner in:

- (i) Sports and Recreation Forum
- (ii) Strategic Learning Network

Participation in the Community Development Group, Economic Development Group, Health Forum, Social Inclusion Group and the Arts & Culture Group.

Participation in:

- Development of programmes to address the causes of crime (e.g. alcohol and drugs) and domestic abuse
- Development and implementation of a co-operative inter-agency strategy for a Safe City to address anti-social behaviour and support early interventions for youth at risk

DEPARTMENT OF ARTS, HERITAGE, GAELTACHT AND THE ISLANDS

Issues Identified

Participation in the Arts & Culture Group and the Economic Development Group.

Participate in the development of a City Museum

DEPARTMENT OF EDUCATION AND SCIENCE

Issues Identified

Participation in the Arts & Culture Group, Community Development Group, Economic Development Group and the Strategic Learning Network

Participate in the development of a programme to promote Science and Technology at Primary School level

DEPARTMENT OF THE ENVIRONMENT AND LOCAL GOVERNMENT

Issues Identified

Participation in the Integrated Transportation Co-Ordinating Group

Encourage sensitive development of heritage sites and streetscapes

Work with the Department of Justice, Equality and Law Reform and Galway City Council to develop a Housing and Accommodation Strategy for Asylum Seekers and address the housing needs of Refugees in the context of the Galway City Housing Strategy

DEPARTMENT OF JUSTICE, EQUALITY & LAW REFORM

Issues Identified

Develop a Housing and Accommodation Strategy for Asylum Seekers and address the housing needs of Refugees in the context of the Galway City Housing Strategy

DEPARTMENT OF THE MARINE AND NATURAL RESOURCES

Issues Identified

Participation in the Integrated Transportation Co-ordinating Group and the the Natural Environment and Waterways Group



DEPARTMENT OF SOCIAL, COMMUNITY AND FAMILY AFFAIRS

Issues Identified

Participation in the Social Inclusion Group and the Economic Group

DEPARTMENT OF PUBLIC ENTERPRISE

Issues Identified

Participation in the Integrated Transportation Co-Ordinating Group

DÚCHAS

Issues Identified

Participation in the the Natural Environment and Waterways Group

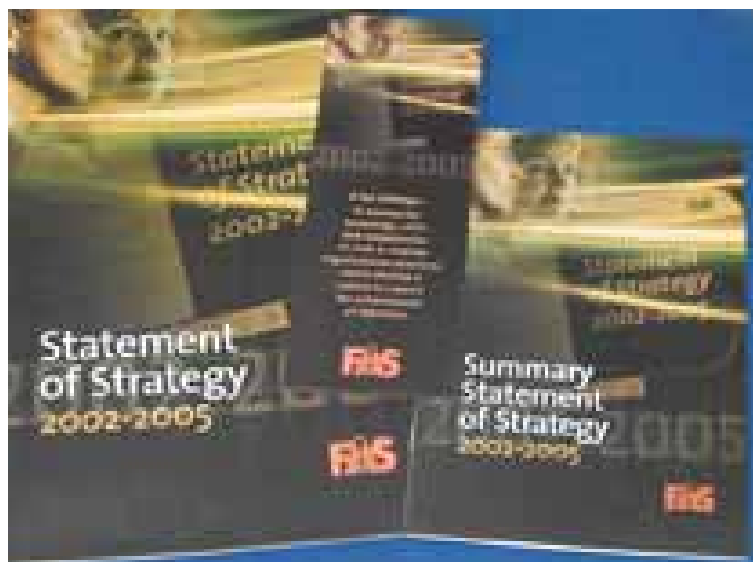
- Encourage sensitive development of heritage sites and streetscapes.
- Participate in the development of an Environmental Programme which promotes awareness of the local environment and heritage
- Identify and protect landscapes of high aesthetic, amenity and heritage value
- Prepare an inventory of significant nature and wildlife habitats in the City to inform policy making

ENTERPRISE IRELAND

Issues Identified

Participation in the Economic Development Group as Lead Partner

Participation in the Tourism Group



FÁS

Issues Identified

Participation in the Economic Development Group, Social Inclusion Group and the Strategic Learning Network

FORAS NA GAEILGE

Issues Identified

Participation in the Arts & Culture Group

Provide Irish language training to public service staff

GALWAY AIRPORT LTD

Issues Identified

Participation in the Tourism Group

- Prepare a Plan for the appropriate level of airport facilities and services for Galway.
- Prepare a plan for upgrading facilities and services at Galway Airport to facilitate each of the following:
 - Accommodation of small jets
 - Development of overseas air services including direct cost effective access to Britain and Europe
 - Provision of a regular commuter service with linkages to the international network
 - A quality service
 - The possibility of re-establishing air links between Galway City and the Aran Islands
 - A guaranteed and sustainable airport and air service

GALWAY CITY COUNCIL

Issues Identified

Participation as Lead Partner in:

- (i) Arts & Culture Group
- (ii) Integrated Transportation Co-Ordinating Group
- (iii) Spatial Planning Group
- (iv) The Natural Environment and Waterways Group

(v) Community Development Group

Participation as Joint Lead Partner in the Social Inclusion Group

Participation in the Economic Development Group, Health Forum, Sports & Recreation Forum, Strategic Learning Network and the Tourism Group

Transport & Infrastructure Strategic Policy Committee (SPC)

- Develop quality infrastructure, including transportation, and utilities
- Establish an inter-agency group to oversee the implementation of the principles underpinning the Barcelona Declaration.
- Ensure adequate water supply and wastewater treatment facilities.
- Implementation of 'Polluter Pays' principle.
- Assist in the preparation of an Access Audit
- Participation in the preparation of a Safe City Strategy
- Develop 'Walking & Cycling' Friendly City.

Housing SPC

- Work with the Department of Justice, Equality and Law Reform to develop a Housing and Accommodation Strategy for Asylum Seekers and include the housing needs of Refugees in the Galway City Housing Strategy.
- Implement and review on an ongoing basis the Galway City Council Housing Strategy.
- Prepare and Implement a Homeless Persons Action Plan.
- Implement and review the Traveller Accommodation Plan.
- Develop and implement estate management and tenant participation strategies.
- Housing SPC to explore the idea of independent living for older people for as long as possible and explore the possibility of designating sites within each community where older people could build their own sheltered housing with land being zoned for this purpose and the provision of a community centre and nursing home in the same environment.
- Review procedures in relation to general housing provision.
- Oversee the implementation of Strategic Actions 1, 2, 3, 5 & 6 as set out on page 49 of the Strategy.

Planning SPC

- Develop a Planning Contributions Scheme with an appropriate emphasis on social infrastructure
- Develop and implement a local Heritage Plan to include:
 - Heritage Awards Scheme
 - Annual Schools Programme
 - Museum Outreach Programme
 - Conservation & Wildlife Inventory
- Develop an information system regarding funding and advice available for the protection and revitalisation of the built heritage
- Encourage sensitive development of heritage sites and streetscapes through:
 - Planning and architectural pre-consultation clinics
 - Design guidelines
- Increase awareness and appreciation of our local history and heritage with the public, developers and schools.
- Produce a Handbook on Heritage Funding.
- Appoint an officer with responsibility for the enforcement of the Building Regulations including accessibility
- Provide adequate zoned land to facilitate the balanced development of business parks across the City
- Work with Galway County Council in developing a Retail Strategy for Galway City and County
- Identify and protect landscapes of high aesthetic, amenity and heritage value

Environment SPC

- Develop an Environmental Programme which promotes awareness of the local environment and heritage
- Increase levels of recycling and waste-reduction in the City
- Encourage good waste management practices by the commercial sector through enforcement of regulations
- Consider the idea of Travellers' involvement in recycling
- Monitor, maintain and improve water quality in the City for consumption and recreation purposes
- Provide a modern sewerage system to meet the needs of the City
- Monitor and maintain air quality standards and promote the use of renewable and clean energy
- Reduce Litter Pollution
- Consider the merits of putting in place a Waste Awards Scheme
- Encourage planting programmes to enhance the appearance of the City including retail and business parks, grounds of public buildings and local communities
- Implementation of 'Polluter Pays' principle
- Maintain a clean attractive environment with good water quality, signage, anti-litter enforcement and clean public areas
- Sustainable waste management regime

Community, Social & Culture SPC

- Develop City Museum
- Develop an Arts Plan
- Develop strategies which support equality of access for all to cultural activities as active and passive participants
- Harness the potential of the library service for cultural development and develop local libraries
- Increase participation in and access to cultural activities in non-traditional contexts including hospitals, residential and training centres and other facilities
- Identify and develop a range of facilities for water-based activities in the City
- Participate in the development of a Sports & Recreation Strategy
- Develop a Parks and Recreation Strategy
- Forestry Interpretative Centre Feasibility Study
- Assist in raising awareness of public service



Cross-Cutting Themes:

- Develop models of Sustainable Communities
- Develop an advanced telecommunication infrastructure capable of supporting the needs of the City
- Participate in the development and implementation of a co-operative inter-agency plan to address anti-social behaviour and support early interventions for youth at risk
- Participation in the preparation of an Air Access Plan
- Implement City Regeneration Initiatives
- Promote design competitions for significant public projects
- Develop a footbridge across the Corrib

GALWAY CITY & COUNTY CHILDCARE COMMITTEE**Issues Identified****Participation in the Social Inclusion Group****Develop and implement a Childcare Strategy for the City****GALWAY CITY DEVELOPMENT BOARD****Issues Identified****Participation in the Regional Group**

- Establish co-ordinating mechanisms with other County and Regional structures to advance policy development and issues of common interest
- Promote co-ordination among agencies through:
 - Informal and formal networking opportunities
 - Joint initiatives in areas of common interest
 - Sharing of information
 - Exchange of experience and best practice
- Promote the development of Equality Awareness programmes in its constituent organisations
- Develop linkage to advance City and County Strategies and Development Plans which are complementary

GALWAY CITY PARTNERSHIP**Issues Identified****Participation as Joint Lead Partner in the Social Inclusion Group****Participation in the Community Development Group, Economic Development Group, Health Forum, Sports & Recreation Forum and the Strategic Learning Network**

- Carry out an access audit and develop strategies targeted at improving access to new and existing buildings.
- Participation in the development of programmes to address the causes of crime (e.g. alcohol and drugs) and domestic abuse
- Participation in the development and implementation of a co-operative inter-agency plan to address anti-social behaviour and support early interventions for youth at risk

GALWAY COUNTY COUNCIL

Issues Identified

Participation in the Integrated Transportation Co-Ordinating Group, Tourism Group, the Natural Environment and Waterways Group

Participation in the preparation of an Air Access Plan

Work with Galway City Council in the development of a Retail Strategy for Galway City and County

GALWAY COUNTY & CITY ENTERPRISE BOARD

Issues Identified

Participation in the Economic Development Group and the Tourism Group

GALWAY COUNTY DEVELOPMENT BOARD

Issues Identified

Participation in the Regional Group

Develop linkage to advance City and County Strategies and Development Plans which are complementary

GALWAY EDUCATION CENTRE

Issues Identified

Participation in the Strategic Learning Network

GALWAY ENERGY AGENCY

Issues Identified

Promote the use of renewable and clean energy



GALWAY HARBOUR COMPANY

Issues Identified

Participation in the Tourism Group and the Natural Environment and Waterways Group

Support the strategic development of Galway Harbour

GALWAY LOCAL AUTHORITIES LIBRARY SERVICE

Issues Identified

Participation in the Arts & Culture Group



GALWAY MAYO INSTITUTE OF TECHNOLOGY

Issues Identified

Participation in the Arts & Culture Group, Economic Development Group, Strategic Learning Network, Tourism Group and the Sports & Recreation Forum

GALWAY TOURISM 2000

Issues Identified

Participation in the Tourism Group

IARNRÓD ÉIREANN

Issues Identified

Participation in the Integrated Transportation Co-Ordinating Group and the Tourism Group



IDA-IRELAND

Issues Identified

Participation in the Economic Development Group and the Integrated Transportation Co-Ordinating Group

Participation in the preparation of an Air Access Plan

IRELAND WEST TOURISM

Issues Identified

Participation as joint Lead Partner in the Tourism Group

Participation in the Arts & Culture Group, Economic Development Group, Integrated Transportation Co-Ordinating Group and the the Natural Environment and Waterways Group

Participation in the preparation of an Air Access Plan

IRISH FILM BOARD

Issues Identified

Participation in the Arts & Culture Group

IRISH SPORTS COUNCIL

Issues Identified

Participation in the Sports & Recreation Group

IRISH TOURIST INDUSTRY CONFEDERATION

Issues Identified

Participation in the Tourism Group

LOUGH CORRIB NAVIGATION TRUSTEES

Issues Identified

Participation in the the Natural Environment and Waterways Group

NATIONAL ROADS AUTHORITY

Issues Identified

Participation in the Integrated Transportation Co-Ordinating Group

NATIONAL SAFETY COUNCIL

Issues Identified

Participation in the Integrated Transportation Co-Ordinating Group



NUI, GALWAY

Issues Identified

Participation in the Arts & Culture Group, Economic Development Group, Strategic Learning Network, Tourism Group and the Sports & Recreation Group

OFFICE OF PUBLIC WORKS

Issues Identified

Participation in the Natural Environment and Waterways Group

Encourage sensitive development of heritage sites and streetscapes

PROBATION & WELFARE SERVICE

Issues Identified:

Participation in the Social Inclusion Group.

- Participate in the development and implementation of a co-operative inter-agency plan to address anti-social behaviour and support early interventions for youth at risk
- Participation in the development of programmes to address the causes of crime (e.g. alcohol and drugs) and domestic abuse

SHANNON DEVELOPMENT

Issues Identified

Participation in the Tourism Group

THE ARTS COUNCIL

Issues Identified

Participation in the Arts & Culture Group

- Participate in the development of:
 - Strategies which support equality of access for all to cultural activities as active and passive participants
 - Increasing participation in and access to cultural activities in non-traditional contexts including hospitals, residential and training centres and other facilities

THE HERITAGE COUNCIL

Issues Identified

Participation in the Arts & Culture Group

In partnership with Galway City Council

- Encourage sensitive development of heritage sites and streetscapes.
- Develop a local Heritage Plan.
- Develop an information system regarding funding and advice available for the protection and revitalisation of the built heritage.
- Identify and protect landscapes of high aesthetic, amenity and heritage value.
- Produce a Handbook on heritage funding.
- Prepare an inventory of significant nature and wildlife habitats in the City to inform policy making.

THE MARINE INSTITUTE

Issues Identified

Participation in the Natural Environment and Waterways Group

TOURISM IRELAND

Issues Identified

Participation in the Tourism Group

ÚDARÁS NA GAELTACHTA

Issues Identified

Participation in the Arts & Culture Group, Economic Development Group, Sports & Recreation Forum and the Tourism Group

To assist Public Service organisations to make services available through Irish



WESTERN DEVELOPMENT COMMISSION

Issues Identified

Participation in the Economic Development Group, Regional Group, and the Tourism Group

WESTERN HEALTH BOARD

Issues Identified

Participation in the Health Forum as the Lead Partner

Participation in the Social Inclusion Group, Spatial Planning Group and the Sports & Recreation Forum

- Strategy for improved medical services for all
- Increased number of nursing home beds and services
- Increased number of options for independent living
- Develop appropriate facilities for older people in the City
- Develop and implement targeted policies for older people, travellers, people with a disability and other marginalised groups addressing their health status and difficulties with accessing the health service
- Build on existing strategies such as Traveller Primary Health Care and Childcare Strategy and continue to develop and expand as appropriate
- Western Health Board to be in a position to support, encourage and promote actions within other organisations, in the development of their Health Strategy. Initiatives such as 'Healthy Eating Week', anti-smoking campaign etc. suggested
- That every school would be engaged in Health Promotion activities
- Increase focus on the Health aspect of the Health and Safety Legislation.
- Prepare a Youth Homeless Strategy
- Participation in the preparation of a Safe City Strategy
- Assist in the development of programmes to address the causes of crime (e.g. alcohol and drugs) and domestic abuse
- Assist in the preparation of a co-operative inter-agency plan to address anti-social behaviour and support early interventions for youth at risk

WESTERN REGIONAL AUTHORITY

Issues Identified

Participation as Lead Partner in the Regional Group

WESTERN REGIONAL FISHERIES

Issues Identified

Participation in the Natural Environment and Waterways Group



Appendix III

ACTIONS APPORTIONED TO SECTORS/INTERESTS

THE STATUTORY SECTOR

Issues Identified

- Public Service organisations to make services available through Irish
- Work with Foras na Gaeilge in making Irish Language training available to public service staff

THE BUSINESS SECTOR

Membership includes Engineers & Architects Small Practice Group, Construction Industry Federation, Westbic, IBEC, City Bin Company, Small Firms Association, Irish Exporters Association, Irish Tourism Industry Confederation, Irish Hotel Federation, Irish Small and Medium Enterprise Association, High Street Traders, Heart of Galway Association and Galway Chamber of Commerce and Industry

Issues Identified

- Participation in the Economic Development Group, Health Forum, Integrated Transportation Co-Ordinating Group, Social Inclusion Group, Strategic Learning Network, Tourism Group and the Sports & Recreation Forum
- Participation in the development of a Safe City Strategy
- Encourage sensitive development of heritage sites and streetscapes
- Encourage good waste management practices by the commercial sector through enforcement of regulations



COMMUNITY & VOLUNTARY SECTOR

Galway City Community Forum is the representative, collective voice of the Community & Voluntary Sector in Galway City

Issues Identified

- Participation in the Arts & Culture Group, Community Development Group, Economic Development Group, Health Forum, Integrated Transportation Co-Ordinating Group, Social Inclusion Group, Spatial Planning Group, Sports & Recreation Forum, Strategic Learning Network, Tourism Group and the Natural Environment and Waterways Group

Participation in:

- The development of Models of Sustainable Communities
- The preparation of an Access Audit
- The development of programmes to address the causes of crime (e.g. alcohol and drugs) and domestic abuse

- The development of a Co-operative Inter-Agency Plan to address anti-social behaviour and support early interventions for youth at risk
- The preparation of a Safe City Strategy
- The encouragement of sensitive development of heritage sites and streetscapes
- The development of an Environmental Programme which promotes awareness of the local environment and heritage

THE EDUCATION SECTOR

Membership includes The Department of Education & Science, The National Parents Council, City of Galway Vocational Education Committee, National University of Ireland, Galway, Galway Mayo Institute of Technology, Galway Teachers' Centre, Primary and Post-Primary Schools

Issues Identified

- Participation in the Community Development Group, Integrated Transportation Co-Ordinating Group, Spatial Planning Group Health Forum, Natural Environment and Waterways Group and the Strategic Learning Network
- Participation in the development of:
 - Programmes to address the causes of crime (e.g. alcohol and drugs) and domestic abuse
 - Co-operative inter-agency plan to address anti-social behaviour and support early interventions for youth at risk
 - An Environmental Programme which promotes awareness of the local environment and heritage

TRADE UNIONS

Issues Identified:

- Participation in the Health Forum, Economic Development Group, Social Inclusion Group and the Strategic Learning Network

THE CHURCHES

Issues Identified

- Participation in the Social Inclusion Group, Community Development Group and the Strategic Learning Network

PRIVATE BUS OPERATORS

Issues Identified

- Participation in the Integrated Transportation Co-Ordinating Group

POLITICAL PARTIES

Issues Identified

- Participation in the Community Development Group

LOCAL MEDIA

Issues Identified

- Participation in the Arts & Culture Group and the Community Development Group

TAXI AND HACKNEY OPERATORS

Issues Identified

- Participation in the Integrated Transportation Co-Ordinating Group



Appendix IV

GLOSSARY

ACCESSIBLE

Easy to reach, to get to or to use.

AGENCIES

Organisations involved in the implementation of the Strategy:

An Garda Síochána, Bord Fáilte, Border Midland & Western Regional Assembly, Bus Éireann, City of Galway Vocational Education Committee, Department of Arts, Heritage, Gaeltacht & the Islands, Department of Education & Science, Department of the Environment & Local Government, Department of Justice, Equality & Law Reform, Department of the Marine and Natural Resources, Department of Social, Community & Family Affairs, Department of Public Enterprise, Dúchas, Enterprise Ireland, FÁS, Foras na Gaeilge, Galway Airport Ltd, Galway Chamber of Commerce, Galway City Council, Galway City & County Childcare Committee, Galway City Development Board, Galway City Partnership, Galway County Council, Galway County & City Enterprise Board, Galway Education Centre, Galway Energy Agency, Galway Harbour Company, Galway Local Authorities Library Service, Galway Mayo Institute of Technology, Galway Tourism 2000, Iarnród Éireann, IDA-Ireland, Ireland West Tourism, Irish Film Board, Lough Corrib Navigation Trustees, National Roads Authority, National Safety Council, NUI, Galway, Office of Public Works, Shannon Development, The Arts Council, The Heritage Council, The Marine Institute, The Sports Council, Tourism Ireland, Údarás an Gaeltachta, Western Development Commission, Western Health Board, Western Regional Authority, Western Regional Fisheries Board

ALL

In the context of the Strategy, “All” & “For All” refer to everyone in Galway City including members of marginalised groups.

BARCELONA DECLARATION

An international agreement by which the City undertakes to establish structures for ongoing consultation with people with disabilities

BUSINESS SECTOR

Collective representation of business & employers' interests in Galway City.

BUY-IN

Agreement to become actively involved by an individual or organisation.

CAPACITY

Power or competence; in context of the Strategy, ability to participate fully.

CHILD FRIENDLY CITY

A City that is safe, stimulating and responsive to the needs of children.

CHILD FRIENDLY INFRASTRUCTURE

Infrastructure which accommodates the needs of children.

CITY REGENERATION INITIATIVES

Initiatives that contribute to the physical, social, economical & cultural renewal of the City.

COMMUNITY AND VOLUNTARY SECTOR

Collective representation of community & voluntary groups in the City.

CORPORATE CITIZENSHIP

An emerging idea of businesses having civic and social responsibilities.

CORPORATE POLICY GROUP

Made up of the 5 chairpersons of Galway City Council's Strategic Policy Committees plus the Mayor, this group acts as a sort of cabinet to streamline the presentation of new policies to the City Council.

CYCLIST FRIENDLY INFRASTRUCTURE

Infrastructure which accommodates the needs of cyclists.

DATA DEFICIT

Refers to the lack of relevant or up-to-date information or statistics.

DATASETS

Detailed collections of data and statistics.

DESIGN OUT CRIME

A programme which introduces ways to deter crime by changing the design of buildings and public spaces.

ENTERPRISE

In the context of the Strategy, the development of a culture which builds on local strengths to develop & ensure economic prosperity.

EQUALITY PROOFING

Making sure the Strategy treats everyone equally and does not discriminate against any group. This particularly applies on the grounds of: gender, marital status, family status, sexual orientation, religious belief, age, disability, race or membership of the Travelling community.

GOAL

A step to be reached on the way to achieving the vision.

HEALTHY CITY

A process of co-operation between citizens, people from business, government and other sectors of society which benefits both the well-being of individuals and the general health of the City as a whole.

INDEPENDENT LIVING

Putting in place structures and supports which allow people (including, for example, people with a disability and older people) to live independently

INDICATOR

Something that can be measured that tells if an objective is being achieved and that a goal is being reached.

INFRASTRUCTURE

Basic facilities, services and equipment needed for a country, city, community or organisation to function properly.

INTERCULTURALISM

Interculturalism describes a process that promotes interaction and understanding among and between different cultures and ethnic groups.

**KNOWLEDGE BASED INDUSTRY -
KNOWLEDGE BASED ECONOMY**

Industry & services which are based on employees' knowledge and skills and not just on their physical labour.

KYOTO PROTOCOL

The United Nations Framework Convention on Climate Change (UNFCCC) and the resulting Kyoto Protocol sets targets to cut back greenhouse gas emissions including carbon dioxide to 1990 levels by the year 2012.

LEAD PARTNER

The main organisation responsible to the Board for implementing the actions from the Strategy or for drawing together the members of the co-ordination groups.

LEARNING

The acquisition of knowledge or skills throughout one's life.

LEARNING ORGANISATION

An organisation which is committed to learning, collectively and at the level of individual members of the organisation

LOCAL AGENDA 21

The means by which local authorities actively involve the local community in working together towards sustainable development.

LOW PAY

Relates to the level of earnings and the level of income which is below what is necessary to provide for a household's basic needs and which leaves people with little disposable income

MARGINALISED GROUPS

Asylum Seekers/Refugees, Children at Risk, Disadvantaged Women, Ex-Prisoners, Lone Parents, Disadvantaged Men, Minority Groups, Older People, People with Disabilities, Early School Leavers, Pupils in Schools with Poor Retention Rates, Substance Misusers, The Homeless and Those in Housing Need, The Under-Employed/Low Paid Workers, The Unemployed, Travellers, Youth at Risk, Geographic Areas of Disadvantage, Adults with Literacy Problems, Vulnerable Families and Individuals, Migrants, People suffering addictions other than substance misuse.

MULTI-CULTURAL

Relating to a diversity of ethnic cultures within a community.

NATIONAL SPATIAL STRATEGY

National strategy which will influence the relationship between the location of people & resources to ensure a sustainable & competitive economy, the highest environmental standards & a good quality of life.

NATURAL HERITAGE AREAS

Areas which are protected because of their importance as part of the physical and natural heritage of the country. All other nature conservation designations, including SPAs and SACs come under the umbrella of NHAs.

OBJECTIVE

A specific activity or action on a thematic or sectoral basis.

OUTCOME

The result of carrying out an action.

OUTPUT

Something that is done or produced to achieve an objective, e.g. a Plan, a Directory etc.

OUTREACH

Programmes which happen within communities rather than in a fixed or central location.

PEDESTRIAN FRIENDLY INFRASTRUCTURE

Infrastructure which accommodates the needs of pedestrians.

PER CENT FOR ARTS SCHEME

A scheme by which one per cent of the monies allocated to public building projects goes toward commissioning art for display in or near that project.

PLANNING CONTRIBUTIONS SCHEME

Where someone developing a building pays a contribution to the local authority for facilities and services.

PROOFING

An ongoing process which ensures that agreed key topics and themes are explicitly taken into account in the Strategy and throughout its implementation. Specifically relates to the impact of the Strategy on Poverty, Equality, Environmental Sustainability and Rural Development.

REGIONAL GATEWAY

A centre which has a strategic location relative to a surrounding area & has the ability to energise its hinterland and be energised by it.

SENSE OF CITIZENSHIP

Sense of being part of, belonging to a place or a community to which one can contribute. The community has responsibilities to the individual and individuals have responsibilities to the community.

SOCIAL EXCLUSION

The exclusion of people, groups or communities from participating fully in society as a result of experiencing poverty or not having access to social, cultural and recreational opportunities.

SOCIAL INCLUSION

Actively counters cumulative marginalisation from production (unemployment), from consumption (poverty), from social networks (community, family, neighbours), from decision-making and from an adequate quality of life.

SOCIAL PARTNERSHIP

Process of government, business & employers, trade unions and community & voluntary organisations working together to develop joint solutions to issues of mutual importance.

SPATIAL PLANNING

Takes into account the location of development activity: industrial, tourism, residential, retail, leisure & the nature of transport connections between locations.

SPECIAL AREAS OF CONSERVATION

Or SACs, are areas designated to protect habitats and species.

SPECIAL PROTECTION AREAS

Or SPAs, are areas designated for the protection of birds.

STAKEHOLDER

An individual or a group that has an interest and involvement in the future of Galway City.

START UP CLUSTERS

Groups of institutions, agencies or individuals with specialised expertise in starting and growing new companies in close physical proximity to one another.

STATUTORY AGENCIES

Agencies which are established and are governed by legislation or statute.

STRATEGIC POLICY COMMITTEES

Established to develop more effective involvement of City Councillors & representatives from the social partners in the development of local policies. The Chairperson of each Strategic Policy Committee (SPC) sits on the City Development Board.

STRATEGY

In this context, a ten-year plan for the City of Galway.

SUSTAINABLE DEVELOPMENT

Development that meets the needs of the present without compromising the ability of future generations to meet their own needs.

SWOT

Identification and analysis of the key Strengths, Weaknesses, Opportunities and Threats facing the City. It enables an understanding of the City's past, present, and, to some extent, future.

TARGET GROUPS

Those groups who are identified as needing particular measures to ensure Social Inclusion. (See Marginalised Groups)

UNDER EMPLOYMENT

A term often simply used to describe people in part-time work who want or need to work more hours. Can also be people who feel under-utilised in their present employment; have training/education not required by their current job; or would change job in order to better utilise their skills/education.

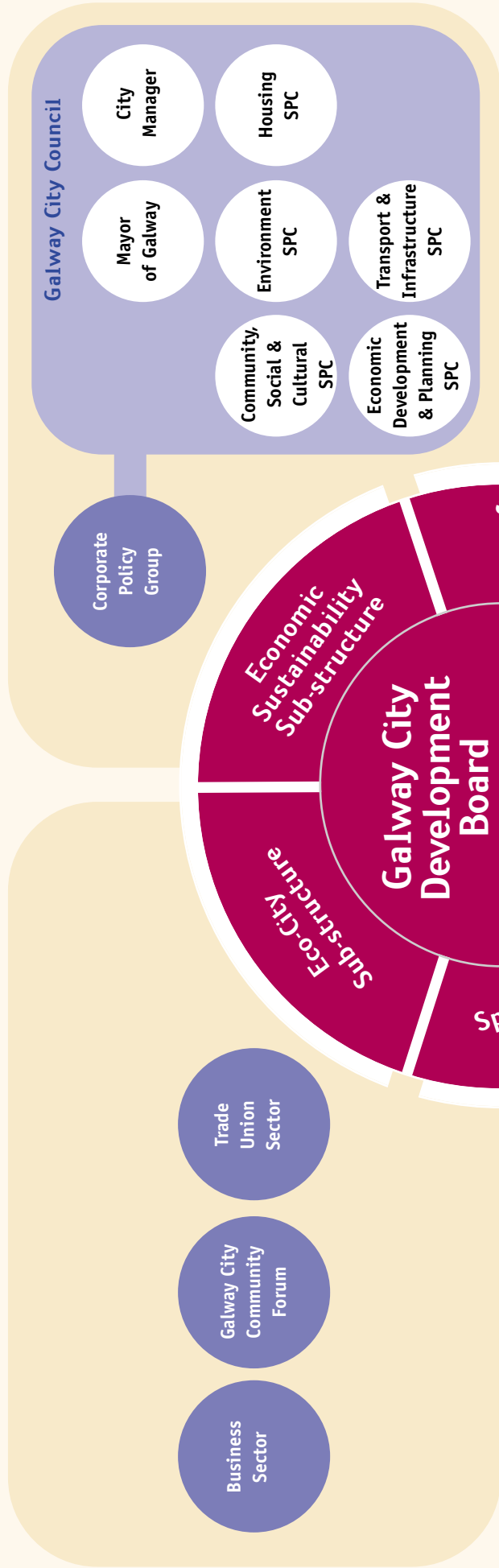
WALKING BUS

Children organised to walk to school in groups.

Social Partners Na Páirtithe Sóisialta

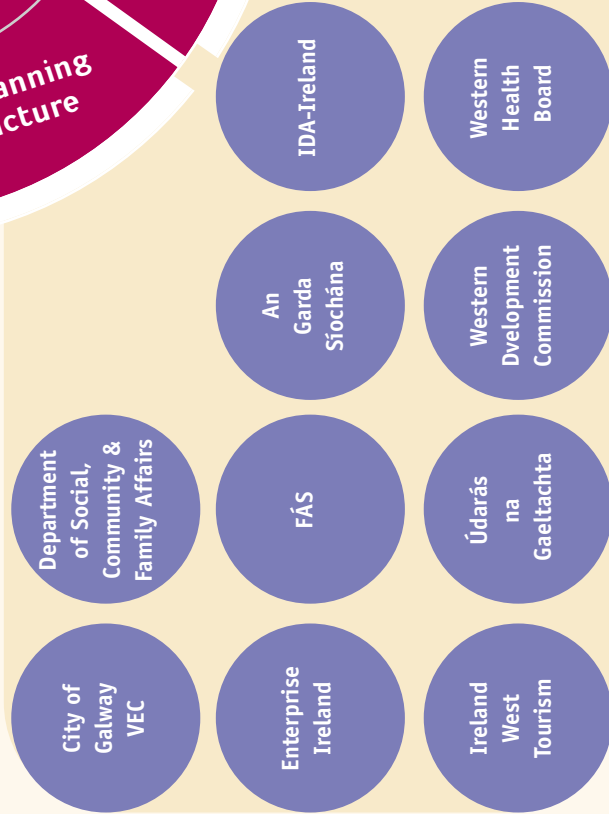


The Stakeholders Na Páirtí Leasmhara



Local Government Rialtas Aitiúil

State Agencies Earnáil an Stáit



Local Development Forbairt Aitiúil



