

## Galway City Guide System Requirements:

This City Guide is suitable for Internet Explorer users only.  
(A Liteview, cross-browser compatible version will be available shortly.)

A 1.4MB download is required to install the MapViewer.

<u>Line Speed</u>	<u>Approximate download time</u>
ISDN or DSL	2 minutes
56Kbps	4-5 minutes

The City Guide is most suited to users with a high speed or broadband internet connection.

OSi Copyright Statement:

The mapping contained in the Planning Enquiry Application has been supplied with the permission of the Ordnance Survey Ireland. Unauthorised reproduction infringes copyright laws and may lead to prosecution or civil proceedings.  
(©Ordnance Survey Ireland. All rights reserved. Licence No. 2003/07 CCMA/  
Galway City Council.)

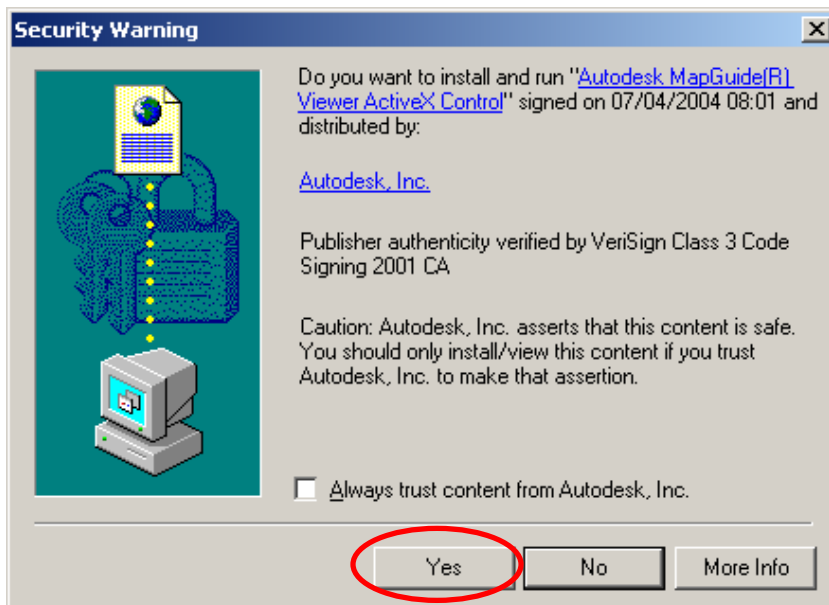
Galway City Council Disclaimer:

The data provided through this service is to be used for representative purposes only. Galway City Council will not be held liable for any inaccuracies therein.

## Instructions for Using Galway City Guide:

### 1. First use of the City Guide:

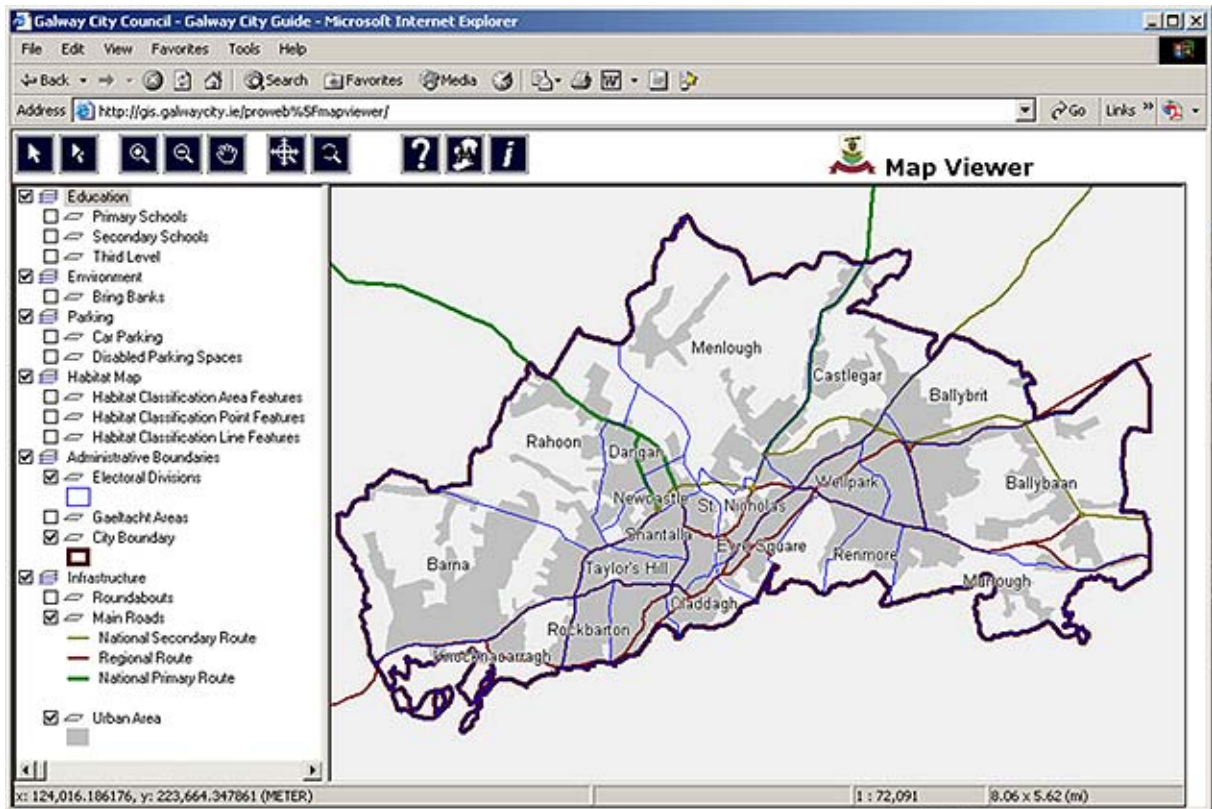
Install the Autodesk plug-in when prompted (This only needs to be done the first time that you access the City Guide. Users of Galway City Council's Advanced Planning Enquiry system have already installed this plug-in.)



(If this option does not appear, click here to download the viewer manually:  
[Download MapGuide Viewer](#))

## 2. The Map

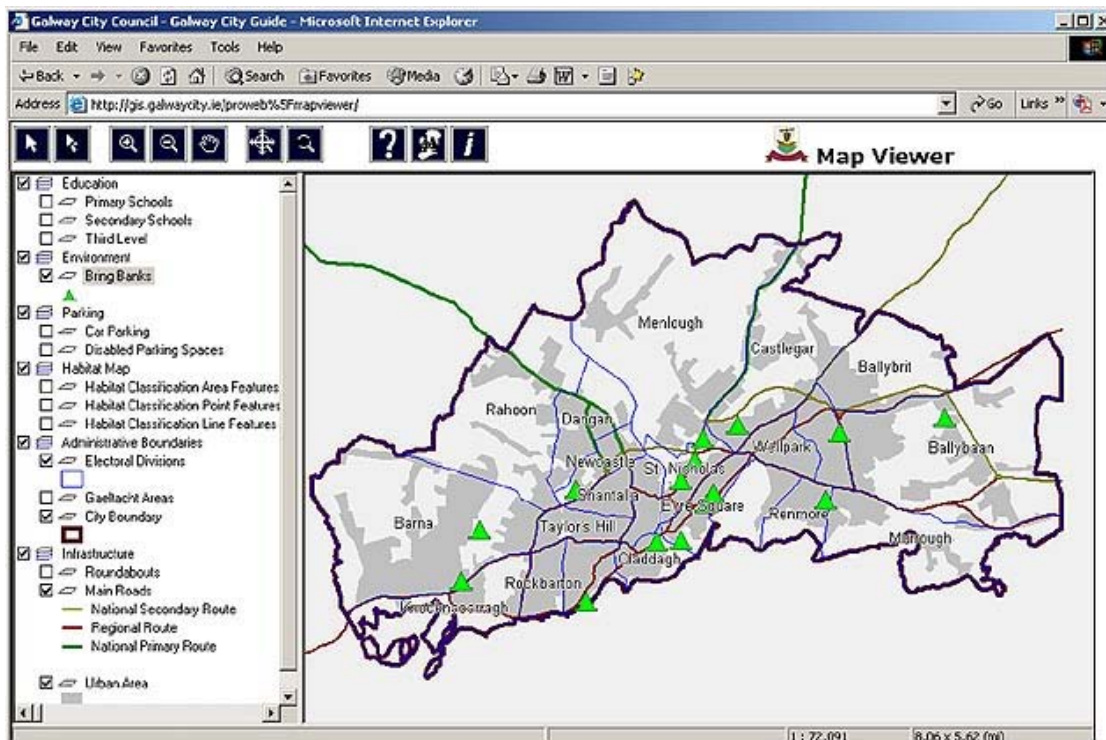
The map below will display when the viewer has been successfully installed.



## 3. How to switch on and off layers:

Check the tick box next to the item that you want to add or remove from the map.

See Bring Banks below:



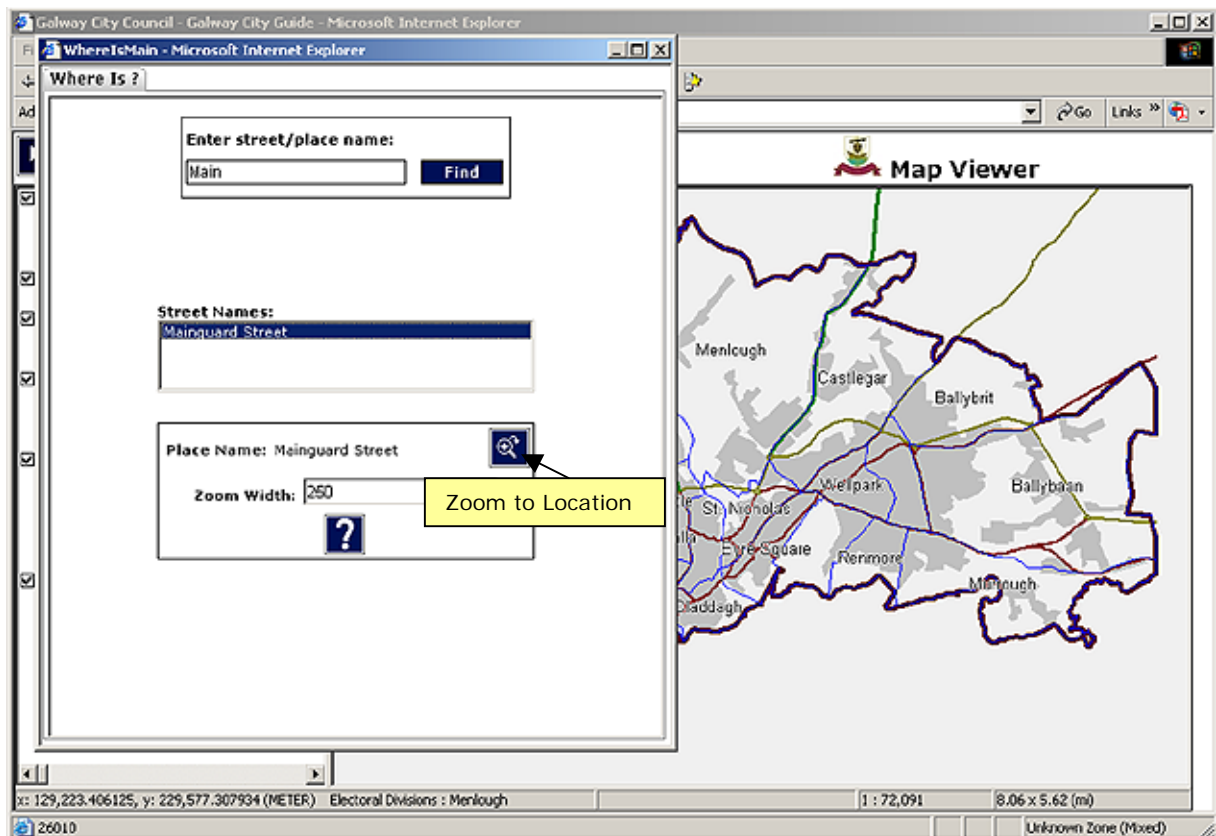
#### 4. The ToolBar

Hover your mouse cursor over the tools on the toolbar for a description of the tool.



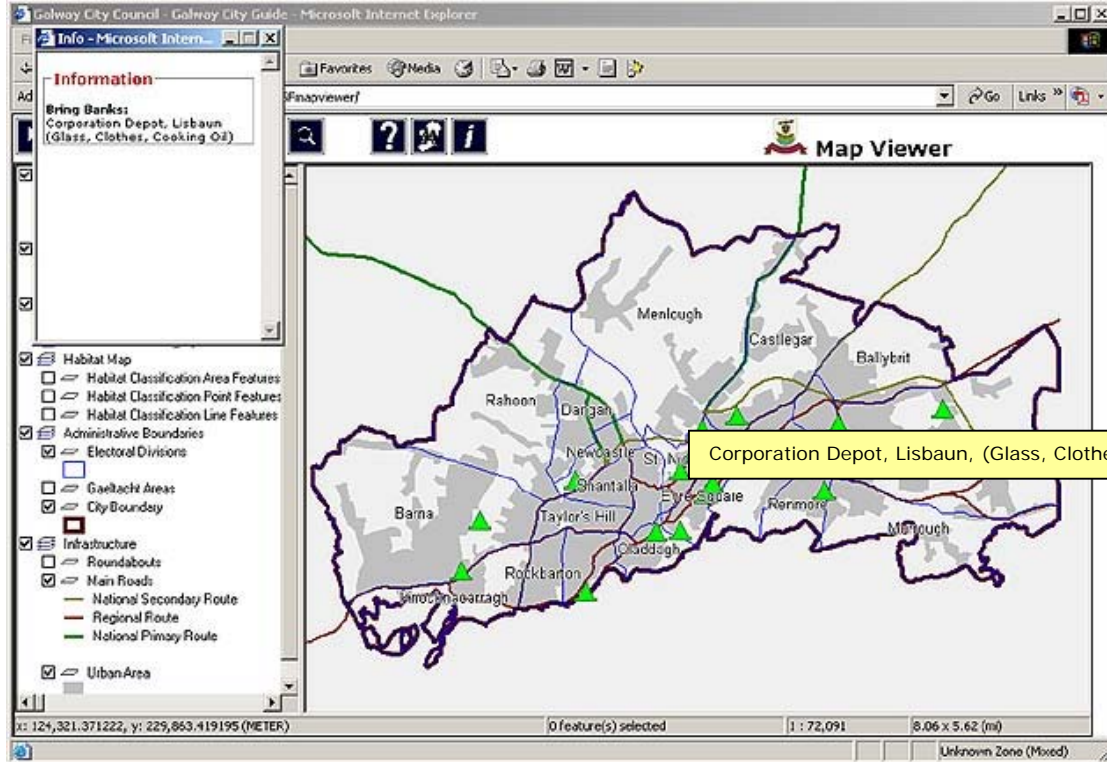
#### 5. How to search for a location:

Click on the "Where Is" button, enter the location name that you want to search for and click on "zoom to location" to re-centre the map at your chosen location.



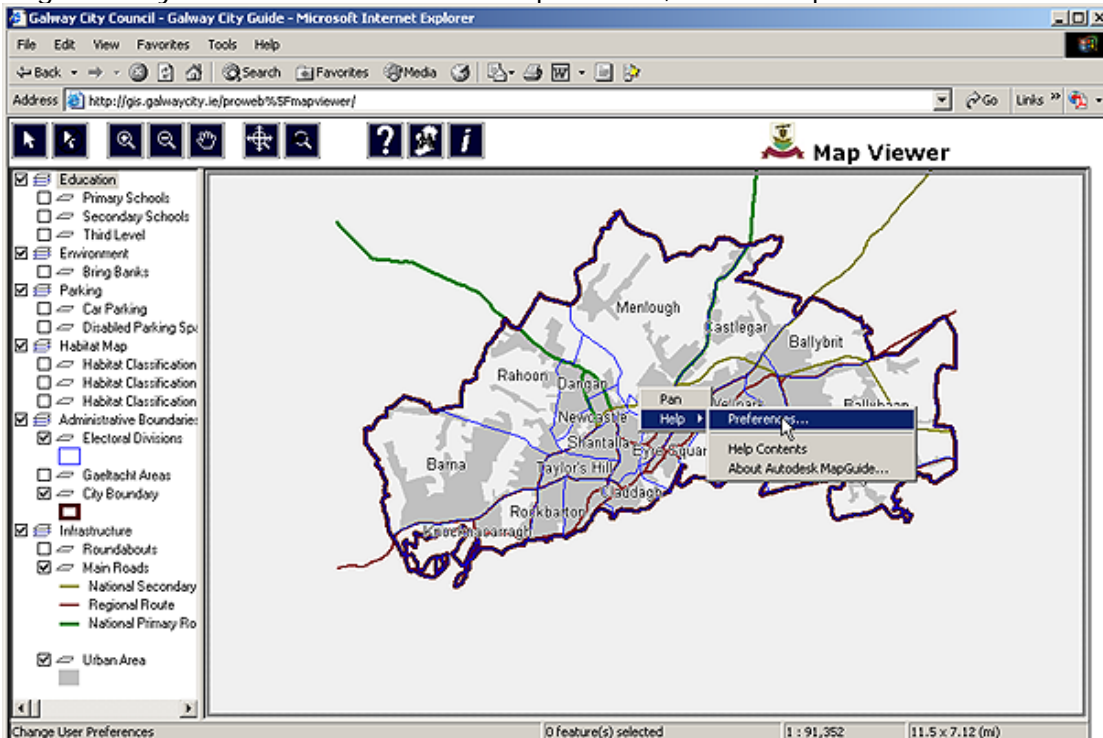
## 6. Using the Info tool:

Select the Info tool on the toolbar and click once on a feature on the map to get some details on the feature. (This functionality is not available for all features- you will not be able to select features on the map that don't have associated information.)

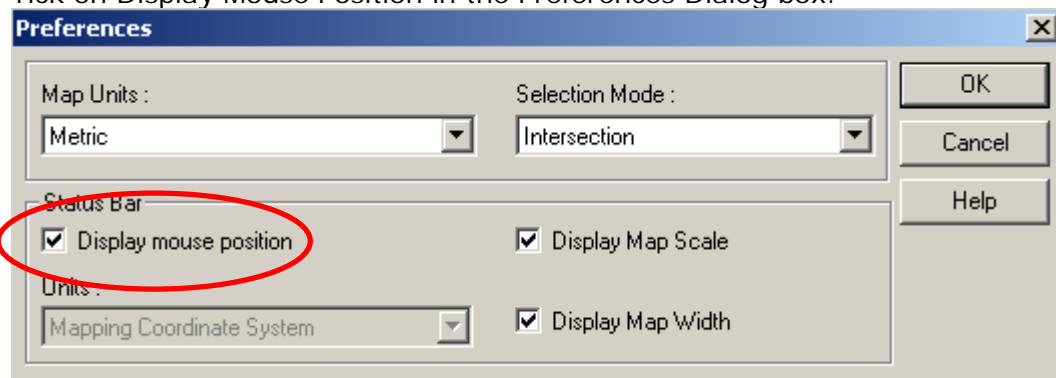


## 7. To display X, Y (Easting and Northing) Coordinates.

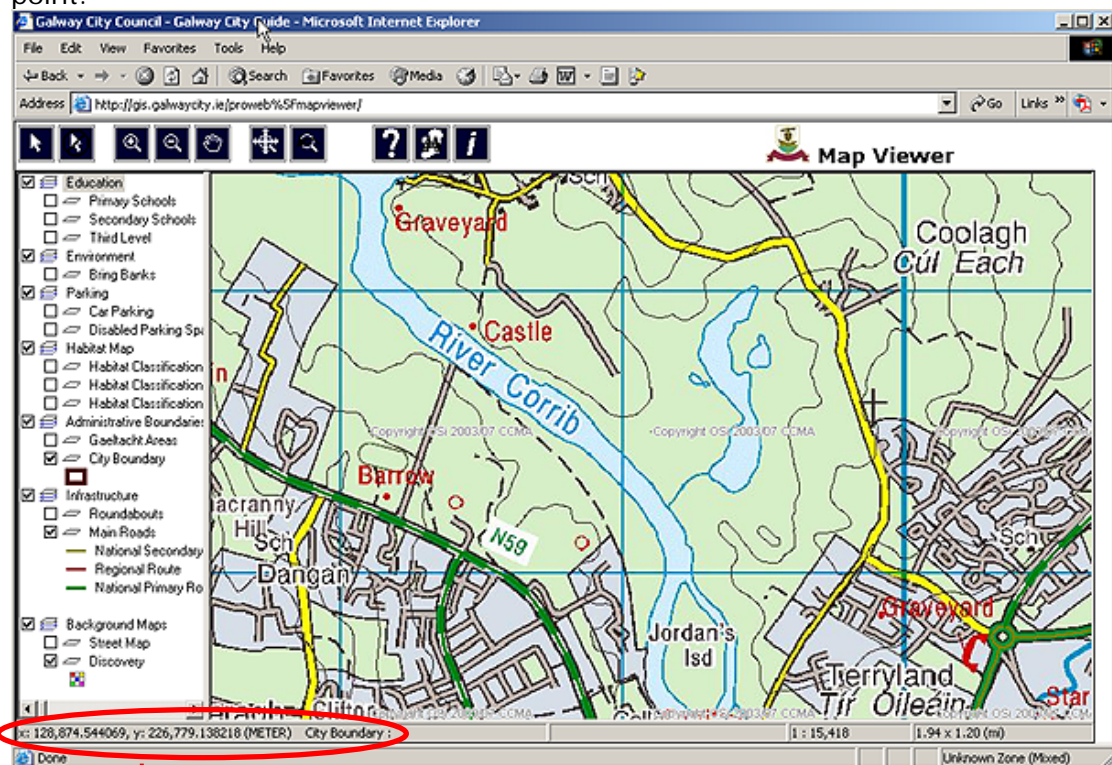
Right click your mouse once on the map window, select Help>Preferences.



Tick on Display Mouse Position in the Preferences Dialog box.



Hover your mouse cursor over the map to see the coordinates for a particular point.



X is the Easting Coordinate Value, Y is the Northing Coordinate Value.