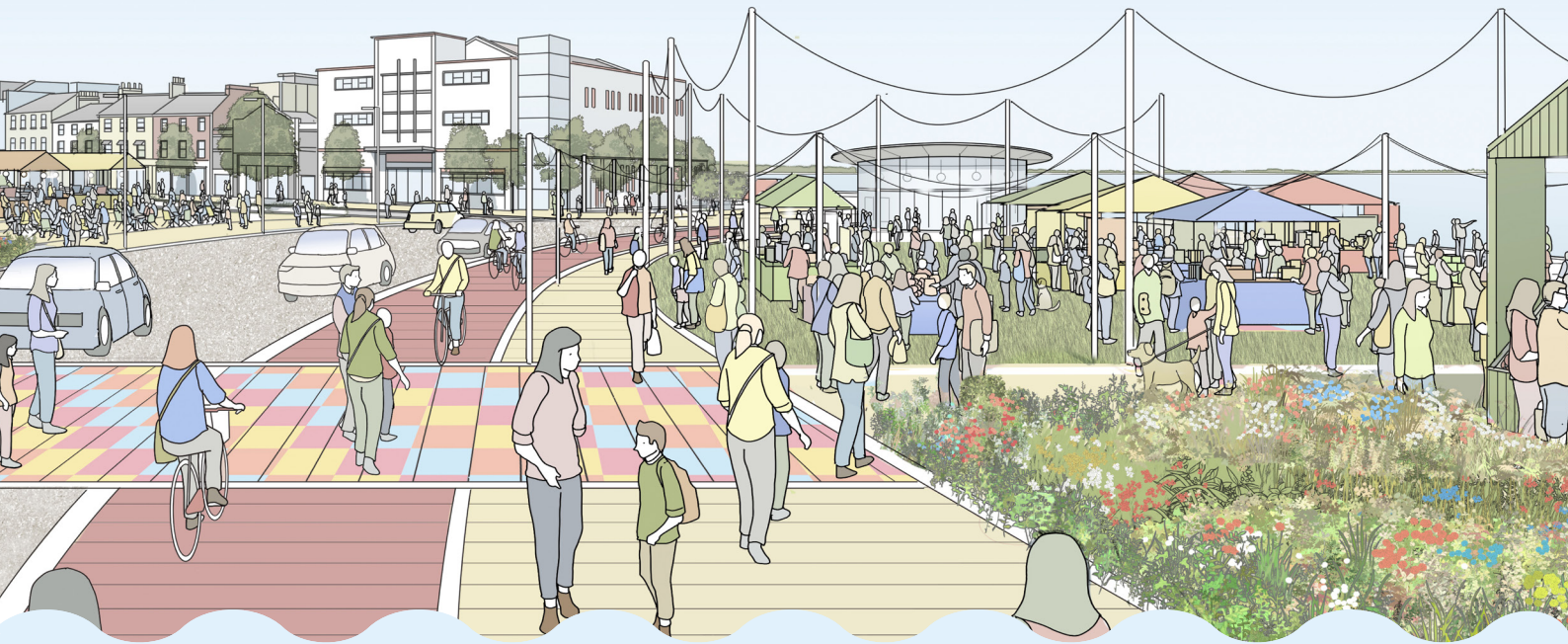


STAGE 2 DESIGN CHARRETTE

FEEDBACK REPORT

CÉIM 2 CEARDLANN DEARADH

TUARASCÁIL AISEOLAIS



SALTHILL

VILLAGE AND SEAFRONT

BÓTHAR na TRÁ

An tSRÁIDBHAILE agus CLADACH

CONTENTS

ENGAGEMENT SUMMARY	4
DAY 1 OF CHARRETTE	8
1.1 OVERVIEW	10
1.2 SESSION 1: CONTINUING THE CONVERSATION	12
1.3 SESSION 2: DEVELOPING A VISION	16
2 DAY 2 OF CHARRETTE	22
2.1 OVERVIEW	24
TIDAL POOLS	26
TOFT PARK	30
BLACKROCK DIVING TOWER	34
PROMENADE FLOOD RESILIENCE	40
BEACH STREET	44
AN ACTIVE SALTHILL	50
VILLAGE APPROACH	54
VILLAGE CENTRE	62
3 FURTHER REPRESENTATIONS	68
4 NEXT STEPS	70

ENGAGEMENT SUMMARY

Galway City Council, supported by urban design and engagement specialists Allies and Morrison, has launched an exciting project to explore local priorities and help shape the future of Salthill Village and Seafront.

Overview of the First Stage of Engagement

During the first stage of engagement, held in February and March 2025, the project team spoke with the local community, businesses, and leisure groups to gather their views on what they love about Salthill and what improvements could be made to the area. Allies and Morrison prepared a consultation report documenting this stage, which has been published on the Galway City Council (GCC) website.

The report sets out the comments received during the first engagement events, which included drop-in “market stall” events along the Promenade and focus group sessions at the Salthill Hotel.

You can read the report at the following link:

<https://www.galwaycity.ie/news/2025/salthill-engagement-stage-1-report>

Second Stage of Engagement

Building on the feedback gathered during the first stage, a second informal round of engagement took place in June 2025 to collaboratively test ideas before they are finalised. This stage aimed to validate the initial

findings, define an emerging vision, and develop early strategies to form the basis of the Salthill Seafront and Village Framework.

The engagement included a two-day design charrette and a public drop-in event. The charrette brought together a cross-section of stakeholder groups who participated in the first round of engagement. The drop-in session offered members of the public the opportunity to share their thoughts on proposals and ideas presented through artist illustrations.

Feedback from both the general public (during the drop-in event) and stakeholders (on Day 2 of the charrette) has been summarised and presented in this write-up.

This report provides an overview of the feedback gathered across the two days of the design charrette and the public drop-in session.

Next steps

The charrette process demonstrated a strong level of support for the emerging concepts.

The engagement process will help to develop a shared vision for Salthill which embraces the key themes and principles identified through the charrette.

In addition, the write-up has enabled the preparation of a concise list of “design considerations” for each concept. This will enable the refinement of concepts to inform the final strategies and project proposals.



SALTHILL CHARRETTE DAY 1

SESSION 1 : CONTINUING THE CONVERSATION

Outcomes from the first round of engagement - is this a good reflection of the issues and opportunities for Salthill?

SESSION 2 : DEVELOPING A VISION FOR SALTHILL

Help to shape a vision - what are the key themes, principles and outcomes that should inform future planning and projects in the village and seafront?

SALTHILL CHARRETTE DAY 2

PUBLIC DROP-IN EVENT

Open session for members of the public to view the charrette material. Attendees were able to comment on the stage 1 engagement outcomes, help shape a vision and comment on emerging design concepts.

SESSION 3 : SHAPING THE STRATEGIES AND PROJECTS

Explore the potential strategies and projects which will help us to deliver the vision for Salthill - what are the main priorities to shape a successful, resilient place, and how can we balance different needs?

ACHOIMRE RANNPHÁIRTÍOCHTA

Tá tionscadal iontach seolta ag Comhairle Cathrach na Gaillimhe, le tacaíocht ó Allies agus Morrison, speisialtóirí i ndearadh uirbeach agus i gcúrsaí rannpháirtíochta, chun tosaíochtaí áitiúla a fhiosrú d'fhonn cabhrú le toadhchaí Shráidbhaile agus Chladach Bhóthar na Trá a mhúnlú.

Forléargas ar an gCéad Chéim Rannpháirtíochta

Labhair an fhoireann tionscadail, le linn an chéad chéime rannpháirtíochta, a reáchtáladh i míonna Feabhra agus Márta 2025, leis an bpobal, le gnólachtaí agus le grúpaí caithimh aimsire lena gcuid tuairimí a fháil maidir leis an méid is breá leo faoi Bhóthar na Trá agus na feabhsúcháin a d'fhéadfaí a dhéanamh sa gceantar seo. D'ullmhaigh Allies agus Morrison tuarascáil comhairliúcháin ina ndéantar cur síos ar an gcéim seo, tá an tuarascáil foilsithe ar shuíomh gréasáin Chomhairle Cathrach na Gaillimhe (GCC).

Leagtar amach sa tuarascáil na tuairimí a fuarthas le linn na gcéad imeachtaí rannpháirtíochta, inar áiríodh imeachtaí “stainnín margaidh” buail isteach feadh an phromanáid agus seisiúin do ghrúpaí fócais in Óstán Bhóthar na Trá.

Is féidir leat an tuarascáil a léamh ag an nasc a leanas: <https://www.galwaycity.ie/news/2025/salhillengagement-stage-1-report>

An Dara Céim Rannpháirtíochta

Bhí an dara babhta rannpháirtíochta ar siúl i mí an Mheithimh 2025, chun cur leis an aiseolas a bailíodh le linn na chéad chéime, ar mhaithe le comhoibriú ó thaobh smaointe tástála de sula gcuirtear i gcrích iad. Rinneadh iarracht leis an

gcéim seo na torthaí tosaigh a bhailíochtú, an fhís a bhí ag teacht chun cinn a shainmhíniú, agus straitéisí luatha a fhorbairt chun bheith mar bhonn do Chreat Shráidbhaile agus Chladach Bhóthar na Trá.

Bhí ceardlann dearaidh agus imeacht poiblí buail isteach dhá lá san áireamh sa rannpháirtíocht. Tugadh sampla ionadaíoch de ghrúpaí páirtithe leasmhara a bhí rannpháirteach sa chéad bhabhta rannpháirtíochta le chéile le linn na ceardlainne. Chuir an seisiún buail isteach deis ar fáil do mhuintir an phobail a gcuid tuairimí a thabhairt faoi thograí agus faoi smaointe a cuireadh i láthair trí léaráidí ealaíontóra.

Tá achoimre déanta ar an aiseolas a fuarthas ón bpobal i gcoitinne (le linn an imeachta buail isteach) agus ó na páirtithe leasmhara (an Dara Lá (2) den cheardlann) agus curtha i láthair sa léirmheas seo.

Cuirtear forléargas ar fáil sa tuarascáil seo den aiseolas a bailíodh ar feadh dhá lá na ceardlainne dearaidh agus an tseisiún buail isteach poiblí.

Na Chéad Chéimeanna Eile

Léiríodh leibhéal láidir tacaíochta do na coincheapa a bhí ag teacht chun cinn sa phróiseas ceardlainne.

Cuideoidh an próiseas rannpháirtíochta fíis chomhroinnte a fhorbairt do Bhóthar na Trá a chuimsíonn na téamaí agus na prionsabail phríomha a aithníodh leis an gceardlann.

Chomh maith leis sin, cuireadh ar ár gcumas leis an léirmheas liosta gonta a ullmhú de na “breithnithe dearaidh” do gach aon choincheap. Cumasóidh sé sin mionleasú na gcoincheap chun eolas a chur ar fáil do straitéisí agus do thograí deiridh an tionscadail.



LÁ 1 DE CHEARDLANN BHÓTHAR NA TRÁ

SEISIÚN 1 : AG LEANÚINT LEIS AN GCOMHRÁ

Torthaí ón gcéad bhabhta rannpháirtíochta - an léiriú maith atá anseo ar na saincheisteanna agus ar na deiseanna do Bhóthar na Trá?

SEISIÚN 2 : FÍS A FHORBAIRT DO BHÓTHAR NA TRÁ

Cuidiú le fís a mhúnlú - céard iad na téamaí, prionsabail agus torthaí príomha ar chóir dóibh eolas a dhéanamh do phleanáil agus do thionscadail an tsráidbhaile agus an chladaigh?

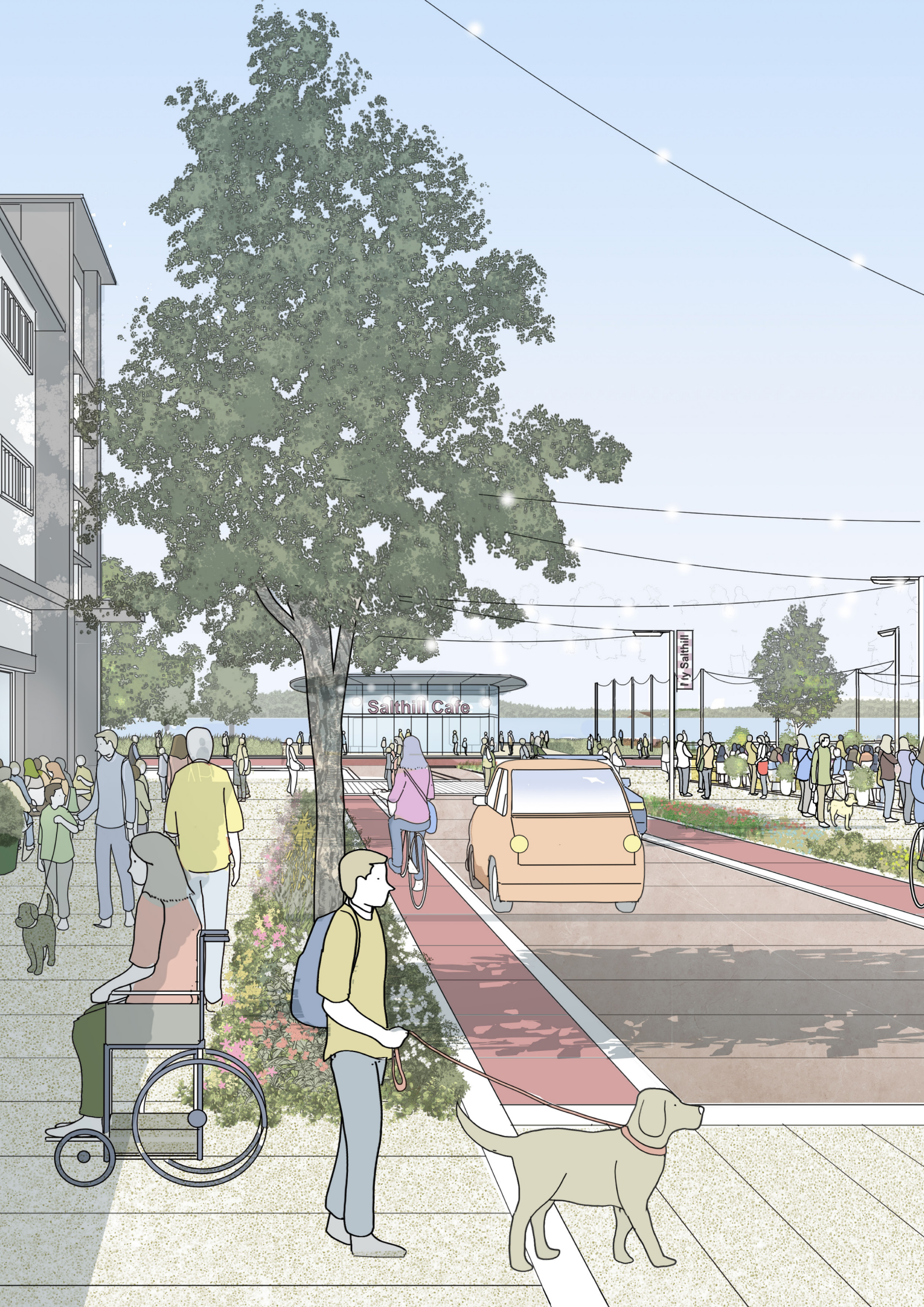
LÁ 2 DE CHEARDLANN BHÓTHAR NA TRÁ

IMEACHT POIBLÍ BUAIL ISTEACH

Seisiún oscailte don phobal chun féachaint ar ábhar na ceardlainne. Bhí ar chumas an lucht freastail tuairim a thabhairt maidir le céim 1 de na torthaí rannpháirtíochta, cuidiú leis an bhfís a mhúnlú agus barúil a thabhairt maidir leis na coincheapa dearaidh a bhí ag teacht chun cinn.

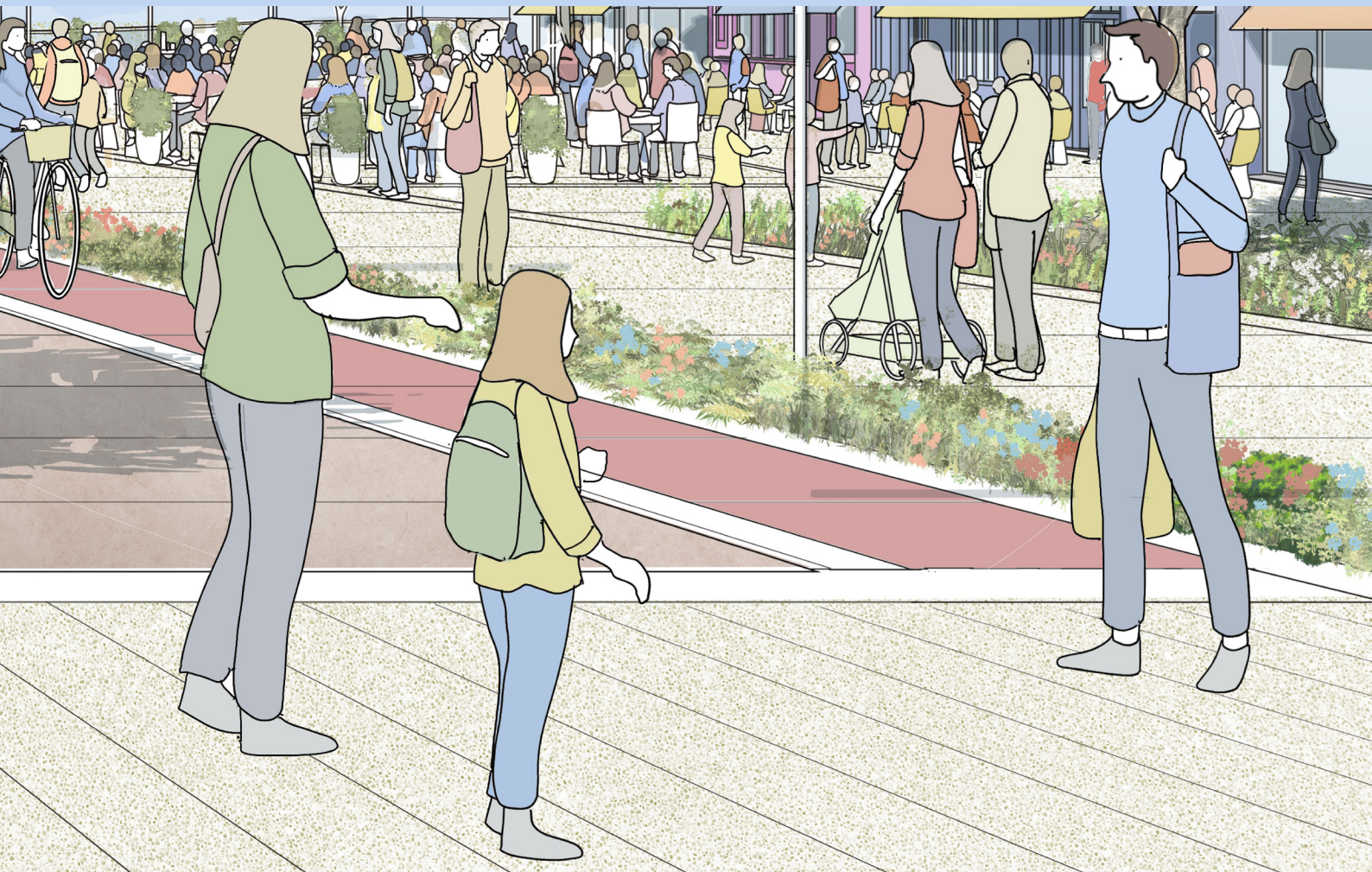
SEISIÚN 3 : AG MÚNLÚ NA STRAITÉISÍ AGUS NA DTIONSCADAL

Na straitéisí agus na tionscadail fhéideartha a iniúchadh a chuideoidh leis an bhfís do Bhóthar na Trá a chur i gcrích - céard iad na príomhthosaíochtaí a bhíonn i gceist le háit rathúil, áit a bhfuil teacht aniar ann, a mhúnlú agus cén chaoi a bhféadfaimis na riachtanais dhifriúla a chothromú?





1 DAY 1 OF CHARRETTE



1.1 OVERVIEW

ATTENDEES

Stakeholders

Local residents

The Village Salthill Business Community

Galway Chamber

*Galway City Council Urban Development
Strategic Policy Committee (SPC)*

Access for All

Galway Cycling Campaign

Local architect

Patrick McCabe Architects

Stewart Construction

Architecture at the Edge

Galway City Council Planning Department

Allies and Morrison Architects

A2 Architects

MB Planning

SESSION 1: CONTINUING THE CONVERSATION

This session reviewed the outcomes from the first round of engagement and explored whether participants felt these outcomes accurately reflected the key issues and opportunities in Salthill.

As part of the workshop activity, attendees were invited to share any feedback on the findings from the first stage of consultation, including which issues they considered top priorities. They were also asked whether the identified themes and sub-themes provided a fair reflection of the challenges and opportunities as they saw them. Participants were encouraged to highlight any gaps or areas requiring greater emphasis as the project progresses. Using a large-scale plan of the area, attendees also identified key locations they felt should be a focus in the next stage of developing design proposals.

SESSION 1: CONTINUING THE CONVERSATION

Do you have any feedback on the findings from the first stage of consultation?
Which are the top priorities? Are there any gaps?

MOVEMENT | ACCESSIBILITY, ROADS, PARKING, CYCLING, PUBLIC TRANSPORT

SPACE AND ENVIRONMENT | PROM, ENVIRONMENTAL, GREEN SPACES, ANTI-SOCIAL BEHAVIOUR, CLIMATE CHANGE

USES AND ACTIVITIES | AGENCIES AND FACILITIES, COMMUNITY NEEDS, BLACKBOXES, RESIN AND SWIMMING, THE VILLAGE, ARCHITECTURE AND CHANGES

OTHER

Coastal Catchment as a Culture
Galway City Council
Allies and Morrison

SESSION 2: DEVELOPING A VISION FOR SALTHILL

This session aimed to involve stakeholders in helping to shape a vision for Salthill Village and Seafront. The group was invited to consider the key themes, principles, and outcomes that should guide future planning and projects in the area. The project team presented a series of ideas about what the vision should achieve. These included celebrating what makes Salthill distinctive; clearly defining desired outcomes; achieving a balance between competing needs; acting as a practical tool for future decision-making; establishing core principles; embracing key themes; and creating a strong place 'brand'.

Building on these ideas, stakeholders were asked to reflect on what local characteristics or assets should be highlighted in the vision, whether physical places or aspects of the local community. Using the thematic headings provided, participants explored what kind of place Salthill should become, and identified the guiding principles that could help achieve that future. Lastly, the group began to formulate an emerging vision statement that would capture these shared priorities and ambitions.

WHAT LOCAL CHARACTERISTICS OR ASSETS SHOULD WE CELEBRATE IN THE VISION?

SESSION 2: WHAT KIND OF PLACE DO WE WANT SALTHILL TO BE?

THEME	WHAT DOES THIS MEAN IN A SALTHILL CONTEXT?	KEY PRINCIPLES
GOVERNANCE A WELL-RUN PLACE How can we get local people involved in the future of Salthill?		
TRANSPORT AND CONNECTIVITY A WELL-CONNECTED PLACE How will we balance competing travel interests in Salthill?		
SERVICES A WELL-SERVED PLACE How will community and visitor needs be met in Salthill in the future?		
ENVIRONMENTAL A GREEN PLACE How can we make Salthill more sustainable and enhance the natural environment?		
EQUITY A FAIR PLACE How will we involve local people in shaping Salthill?		
ECONOMY A THRIVING PLACE What kind of work will make Salthill a vibrant place?		
HOUSING & THE BUILT ENVIRONMENT A LIVABLE PLACE What will Salthill be like to live in?		
SOCIAL AND CULTURAL AN ACTIVE, INCLUSIVE AND SAFE PLACE What will Salthill feel like on a place on different times of the day / year?		

PEOPLE
AND THE
COMMUNITY

PLACES

1.2 SESSION 1: CONTINUING THE CONVERSATION

The feedback from the first session has been grouped into the following key themes: **Movement, Space and Environment, Uses and Activities, and Other Considerations.** Each section below summarises what was discussed under these themes.

MOVEMENT

ACCESSIBILITY

Survey feedback strongly emphasised the need for alternatives to car travel, particularly for short, everyday journeys. There was broad agreement that universal design should underpin all interventions in Salthill, so that public spaces and infrastructure are inclusive and accessible to all. A number of attendees raised concerns about pedestrian crossing facilities, calling for improvements to achieve safer access to the beaches, particularly where roads and cycle lanes intersect.

PARKING

Parking was a concern, particularly in relation to potential knock-on effects for residential areas. Attendees stressed that any changes to parking provision should not result in increased parking pressure on adjoining neighbourhoods. Paid parking was also identified as a potential option.

ROADS

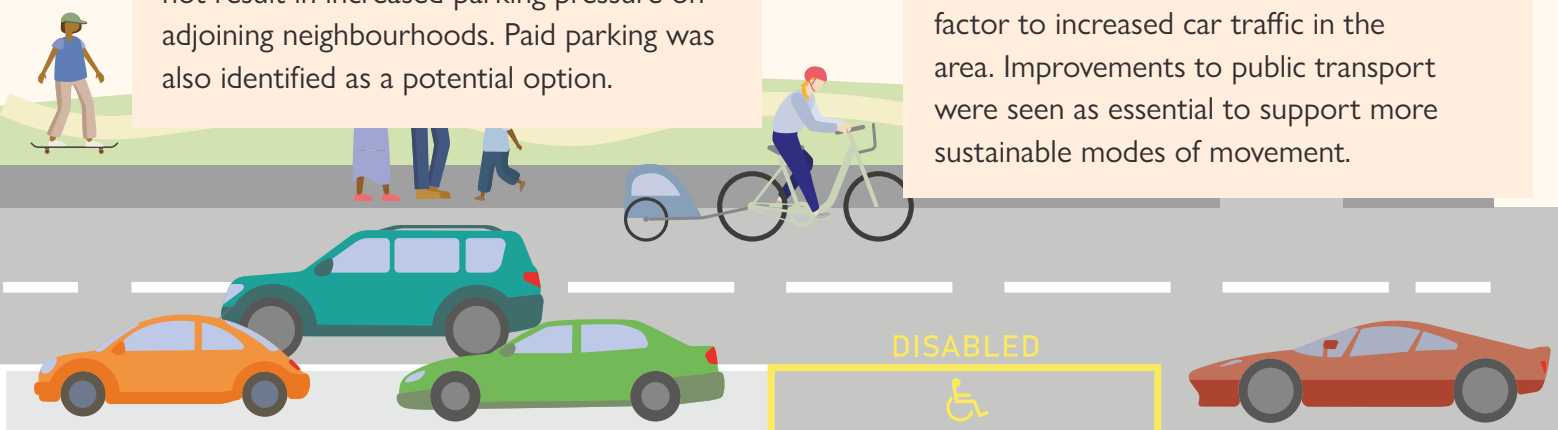
Some participants questioned the data relating to the volume of through traffic in the area, suggesting a need for a traffic survey. Participants spoke about improving road safety, and queried whether raised crossings could slow traffic. There was also a call for improved traffic management, especially during major events, to support the vibrancy of the village. Attendees highlighted the need to consider traffic generated at Leisureland.

CYCLING

A clear need for dedicated cycle infrastructure was identified. However, participants acknowledged that pinch points along the route present challenges that require thoughtful, site-specific solutions. Slower vehicular traffic was also seen as a contributing factor in creating safer and more welcoming conditions for cyclists of all ages.

PUBLIC TRANSPORT

Concerns were raised about the inadequacy of the bus service linking Salthill with the city centre. The absence of a direct route between Knocknacarra and Salthill was also highlighted as a contributing factor to increased car traffic in the area. Improvements to public transport were seen as essential to support more sustainable modes of movement.



SPACE AND ENVIRONMENT

THE PROMENADE

Participants reiterated the importance of applying universal and accessible design principles to the entire length of the Promenade, so that all users can enjoy it equally. The need for new permanent structures along the Prom was questioned by some, with a desire for careful evaluation of their necessity and impact. Better lighting near locations such as the Jungle Café was suggested to improve safety.

ENVIRONMENTAL CONSIDERATIONS

Attendees emphasised the importance of respecting the area's natural setting in any future development. The unique views of the Burren, the beach, and the sea were recognised as defining features of Salthill's identity and should be protected. Proposals should incorporate a strong relationship with the natural landscape, enhancing rather than detracting from these assets. Grattan Beach was also identified as an important site from a climate action perspective.

ANTI-SOCIAL BEHAVIOUR

The design and upkeep of public spaces were seen as important tools in addressing anti-social behaviour.

The Quincentennial Park was specifically mentioned as a place where thoughtful design and ongoing maintenance have made a significant difference.

GREEN SPACES

Green spaces were widely valued and participants stressed the importance of protecting and enhancing them. As noted above, the Quincentennial Park was cited as an example of a well-designed and well-maintained public space. Similarly, Terryland Forest Park was highlighted as a model for long-term planting that benefits future generations. Attendees called for more planting across green areas, with an emphasis on wild and native planting that respects the coastal character of Salthill. Parks should be multifunctional and well-promoted, with successful events like the Salthill 5s and Africa Day serving as good examples of how green spaces can support community life. The green space beside D'Arcy Roundabout, which has hosted events like Tiny Traders, was also recognised for its potential.

CLIMATE CHANGE

There was consensus that all proposals must be climate resilient. Participants viewed the proposed flood protection scheme as an opportunity to integrate attractive landscaping and public realm improvements. There was strong support for combining flood defences with meaningful public space enhancements.



USES AND ACTIVITIES

AMENITIES AND FACILITIES

Salthill was described by some as the “Center Parcs of the West of Ireland,” highlighting its appeal as a destination with diverse attractions. Attendees suggested considering traffic-free periods during major events to improve safety and enjoyment. Improvements to lighting in key public areas were also proposed to enhance the user experience, particularly in the evenings.

SERVING COMMUNITY NEEDS

The need for safe and welcoming spaces for teenagers to gather was highlighted, particularly for teenage girls. Attendees called for a more balanced use of space that caters to a wide range of users. Future planning should consider inclusivity from the outset, taking into account gender, accessibility, and intergenerational needs. Family-friendly areas and quiet spaces, particularly for people with neurodivergencies, for relaxation were identified as essential components of a well-rounded public realm. Potential options for the old Tourist Office were identified.

BLACKROCK, BEACH AND SWIMMING

The strong connection between Salthill and the sea was seen as central to the area’s identity. Participants agreed that any interventions along the coast should respond sensitively to this unique relationship. Quiet areas along the beach were seen as valuable assets that should be protected. There was also an opportunity to improve signage at Blackrock, helping visitors navigate and appreciate the area more easily. Integration of gym equipment was also highlighted as an opportunity.

VILLAGE

The seafront was identified as a major asset for the village, and attendees recognised Salthill as a well-served place in terms of amenities. However, they also noted that improved traffic management and better distribution of space could help the village flourish further.

ARCHITECTURE AND CHARACTER

Salthill’s identity as a family resort was seen as an important part of its heritage. Participants felt that future proposals should respect and reflect the area’s character and history, guided by conservation best practice. The distinctive seaside shelters were mentioned as positive examples of local character, and granite was noted as a material feature that contributes to the area’s sense of place. Shopfront improvements are also a priority.



OTHER CONSIDERATIONS

Examples from elsewhere, such as the Living Streets projects in Dún Laoghaire and Blackrock Village (also Dún Laoghaire Rathdown), were raised as successful models where local business vitality and quality of life had improved hand-in-hand. Some participants felt that Salthill Park should not be subject to further development, noting that a separate project for the redevelopment of Leisureland is already underway and should be coordinated with the Framework Plan.

It was also acknowledged that the Framework Plan needs to take into account several other ongoing projects. These include the Coirib go Cósta Galway City Flood Relief Scheme, the Tidal Pools Restoration Feasibility Study, and the Blackrock Diving Tower Rehabilitation Project. Additionally, it was noted that Galway City Council is commissioning a soundscape analysis of waterways within the city as part of the GCC Heritage Plan, which may have relevance for future interventions in Salthill.

Other topics included enforcement of regulations relating to various issues (roads,

traffic parking, dogs etc).

SUMMARY

Participants recognised the complexity and interconnection of the issues raised. While concerns varied, all were considered valid and deserving of attention. It was acknowledged that no issue should be viewed in isolation, and that addressing one need may open up opportunities elsewhere. Overall, the discussion reflected a shared desire to future-proof Salthill, to make it a place that continues to thrive for generations to come. The feedback indicated broad support for the outcomes from the first round of engagement.



1.3 SESSION 2: DEVELOPING A VISION

Participants highlighted the need for a statement of value that celebrates existing assets of Salthill. These include proximity to the city centre, the vibrant beachfront, peaceful beach atmosphere and local parks. Participants emphasised that the vision for Salthill should be contextual and celebrate the unique character of the area. Placemaking initiatives should be guided by conservation best practice and the area's heritage context, while also addressing modern needs such as safety, movement, accessibility and economic viability.

The responses from the first activity are provided below:

WHAT LOCAL CHARACTERISTICS OR ASSETS SHOULD WE CELEBRATE IN THE VISION?

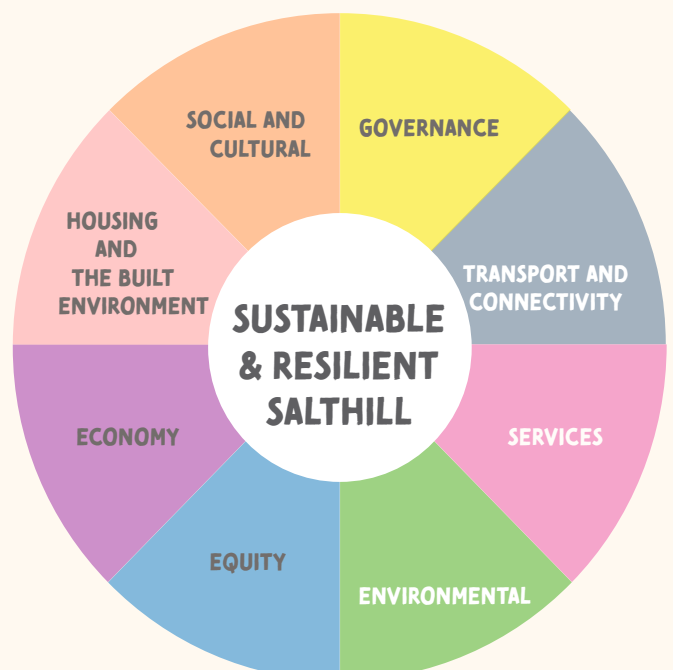
PEOPLE AND THE COMMUNITY

- Strong community identity
- Local engagement process
- Diverse age groups and abilities
- Local business community
- Day trippers / holiday makers

PLACES

- Historic seafront promenade
- Proximity to city centre
- Family friendly seaside resort
- Salthill as a destination
- Vibrant beachfront atmosphere
- Vibrant commercial village adjacent to the seafront area
- Parks adjoining the prom - Salthill Park, Toft Park, Quincentennial Park
- Quiet places along the beach and in the parks

The second activity asked participants to think about what this meant in the Salthill context. This was discussed around several key themes which are illustrated in the 'wheel' below.



GOVERNANCE

The theme of governance focused on how Salthill can be shaped and supported through effective, inclusive decision-making. Participants were asked to consider how local people can be actively involved in the long-term future of the village and seafront, ensuring the area is not only well planned, but well looked after.

Participants called for a clear governance and delivery strategy to support the vision. Success was seen as dependent on both practical short-term projects and more ambitious, long-term thinking.

There was strong support for a “Town Team” model to bring together local groups, businesses, and stakeholders. The new Urban and Community Development Officers at Galway City Council were seen as an opportunity to strengthen collaboration and local leadership.

Better consultation, particularly with young people, was highlighted as essential. Community initiatives like a Tidy Towns Committee, beach cleans, and pride campaigns were suggested as ways to build local ownership. Enforcement of rules, such as the ‘no dogs on beaches’ policy, was also raised.

Key principles

- Local community input in decision-making
- Sustainable delivery mechanisms
- Participatory democracy

TRANSPORT AND CONNECTIVITY

This theme explored how Salthill can balance different travel demands, creating a safe, accessible and sustainable place for walking, cycling, public transport, and cars.

There was strong support for reducing car dominance and promoting active travel. Safer, segregated cycling routes were a priority, both within Salthill and connecting to the wider city. Infrastructure should be accessible for all ages and abilities, with clearly marked crossings for pedestrians, wheelchair users and cyclists.

Improved public transport was a consistent theme. Attendees called for regular, reliable bus services, especially between Salthill and Knocknacarra, to reduce short car trips. Services should prioritise older people and those with disabilities.

Managing parking was also seen as key. Suggestions included paid parking to deter long-stay city commuters, prioritised spaces for disabled users, and exploring park-and-ride options.

Stronger links between the promenade and village were encouraged, along with more pedestrian-friendly areas to create a safer, more inviting public realm.

Key principles

- Prioritise the most vulnerable users
- Create safe, accessible routes and crossings
- Deliver frequent, inclusive public transport
- Balance car parking with sustainable transport

SERVICES

This theme considered how to meet the future needs of both the local community and visitors in Salthill, helping to achieve a good mix of facilities, amenities, and public services.

Participants called for inclusive, accessible services that support residents and visitors of all ages and abilities. There was strong support for enhanced public amenities along the seafront, including seating, toilets, and improved access to swimming areas like Blackrock.

Extending the lifeguard season was seen as important for safety, especially at key swimming spots. Attendees also highlighted the need for better facilities to support beach and water use, such as changing areas and showers.

Community spaces for events, such as music, theatre, and festivals, were seen as key to fostering local identity and vibrancy. Flexible, multi-use venues could serve community groups while also supporting the visitor economy.

A reliable shuttle from park-and-ride facilities was suggested to improve access while reducing car traffic in the area.

Key principles

- Inclusive, accessible and welcoming for all
- Multiple-use spaces to support community life
- Essential amenities like public toilets, seating, and swim safety

ENVIRONMENTAL

This theme explored how to strengthen climate resilience in Salthill while protecting and enhancing its natural and coastal environment.

Participants emphasised the importance of protecting and enhancing green and blue spaces while respecting the coastal character. Flood defence measures should be designed to fit into the natural landscape, using nature-based solutions where possible.

The proposed flood scheme was seen as an opportunity to improve climate resilience as well as the public realm. Schools could play a role in greening initiatives and education around sustainability, supported by local organisations such as the aquarium.

Green spaces should support biodiversity and long-term sustainability, with more habitat areas and environmentally sensitive planting. Participants also called for practical improvements, like more bins and dog-free beaches to protect public areas and wildlife.

Better transport options were also seen as key to reducing car use and associated emissions.

Key principles

- Climate resilience through sustainable design
- Green and blue infrastructure that supports biodiversity
- Long-term sustainability, nature-first approaches, and climate justice

EQUITY

This theme looked at how to encourage local people to be actively involved in shaping Salthill and to see that the area works for everyone, regardless of age, ability, background or income.

Participants highlighted the need for inclusive, family-friendly spaces that serve all users equally. Design should consider people of all ages, genders, and abilities, helping to achieve accessible and welcoming public areas.

A more balanced use of space was encouraged, reducing car dominance to support those who cannot or do not drive, such as younger people, disabled non-drivers, or those from lower-income households. Car dependency was described as a barrier to equity.

People valued the consultation process so far and urged that decisions remain grounded in broad community input not last-minute changes from narrow interests.

Key principles

- Inclusive and accessible for all ages and abilities
- Family-friendly and welcoming
- Transparent and full public consultation to guide decisions

ECONOMY

This theme explored what kind of work and economic activity should be supported in Salthill, and how the area can continue to thrive as both a community and visitor destination.

Participants called for support for local businesses, especially independent traders, and a greater mix of enterprise, retail, and community spaces. There was enthusiasm for market areas and community hubs to attract both local people and visitors.

Salthill should be strengthened as a family-friendly destination with places that cater to all ages and interests. People highlighted that economic success does not have to rely on car access. Examples like Shop Street in Galway were cited to show the value of pedestrian-focused design.

Concerns were raised about free parking being used by commuters who do not spend locally. Better management of parking and public space could ensure more benefit flows to Salthill's economy.

Key principles

- Support local and independent businesses
- Creative and inclusive economy
- Environmental and economic sustainability
- Spaces that support play, activity and all ages

HOUSING AND THE BUILT ENVIRONMENT

This theme focused on what it means to live in Salthill and how the built environment can support a safe, welcoming, and balanced community.

Participants described Salthill as a family place that should continue to evolve with modern facilities and improved public spaces. The built environment should be high quality, with streets and places that feel safe, walkable, and connected to nature.

There was strong support for housing developments that serve local residents rather than short-term lettings. Salthill should be a place where people's everyday needs can be met locally, with nearby shops and services. A key ambition was for children to feel safe and free to explore their neighbourhood independently.

Key principles

- Protect and enhance local character
- Prioritise homes for residents
- Create safe, family-friendly neighbourhoods with local amenities

SOCIAL AND CULTURAL

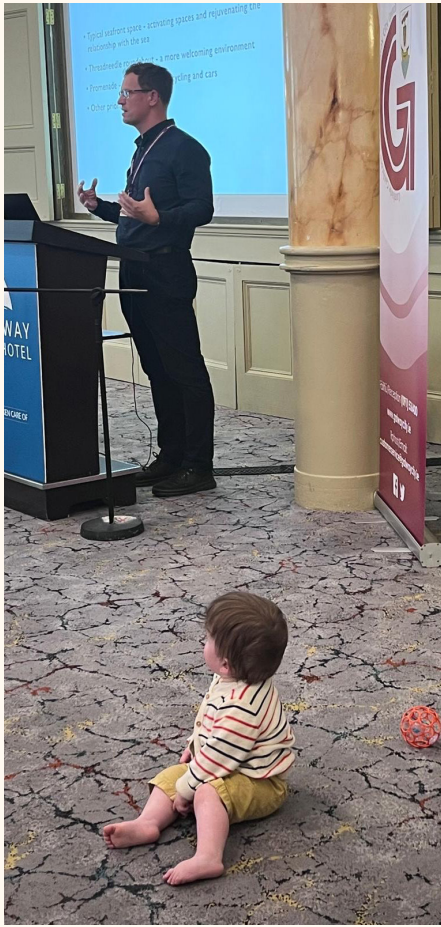
This theme explored how Salthill can be a welcoming place to spend time, day or night, summer or winter, and how it can support both cultural life and everyday social activity.

Participants wanted safe, inclusive spaces for all generations, whether to relax, gather, or take part in events. There was support for areas that feel welcoming throughout the year, whatever the weather, with spaces that embrace Salthill's coastal character.

A flexible approach to public space was encouraged, with opportunities for cultural activities such as busking and performances. There was also a call for a major performance space capable of hosting large events and headline acts.

Key principles

- Safe and welcoming for all
- Appeal across generations
- Spaces for multiple uses and events





² DAY 2 OF CHARRETTE



2.1 OVERVIEW

ATTENDEES

Stakeholders

Local residents

The Village Salthill Business Community

Galway Chamber

*Galway City Council Urban Development
Strategic Policy Committee (SPC)*

Access for All

Galway Cycling Campaign

Local architect

Patrick McCabe Architects

Stewart Construction

Architecture at the Edge

Galway City Council Planning Department

Allies and Morrison Architects

A2 Architects

MB Planning

SESSION 3: SHAPING THE STRATEGIES AND PROJECTS

This session focused on identifying the key strategies and projects that will help deliver the vision for Salthill. It aimed to understand priorities for creating a successful, resilient place and how social, economic, and environmental needs can be balanced. The discussion helped shape the key strands of the overall strategy and define emerging projects that could play a central role in its delivery.

A presentation was made to introduce early design ideas, structured around three themes: the coast, the prom, and the village. For each theme, a set of artist illustrations was shared to bring the concepts to life.

These same illustrations were also displayed earlier in the day during a public drop-in session, where members of the community had the opportunity to review and comment on the ideas. Members of the project team were on hand to guide people through the proposals and answer questions.

Participants in the charrette were invited to reflect on the feedback gathered during the drop-in session. They contributed further by annotating the artist impressions and identifying additional opportunities or interventions on supporting plans.

The following pages present each artist illustration, alongside a summary of feedback received from both the drop-in and charrette sessions.

COAST

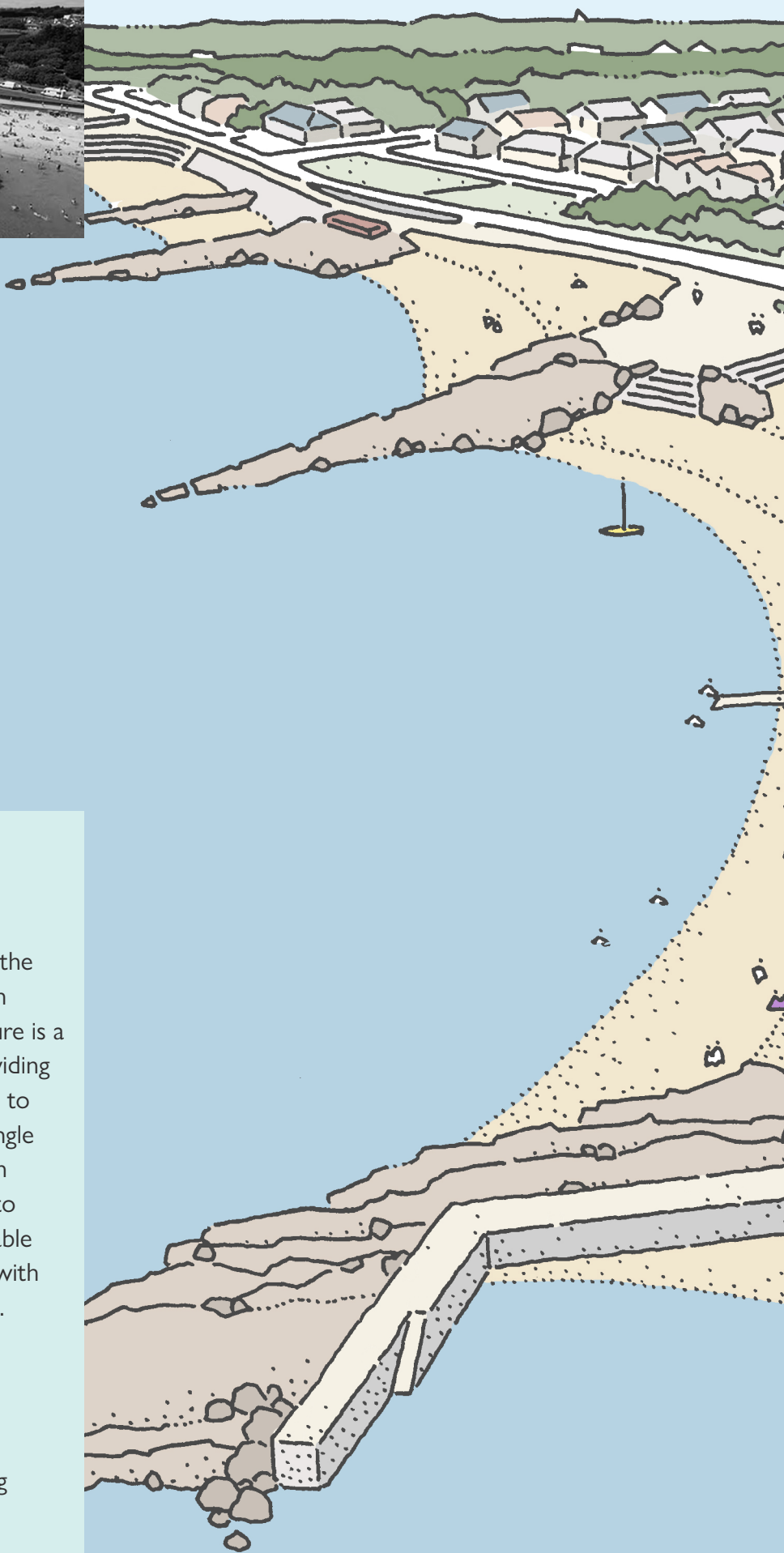


PROM



VILLAGE

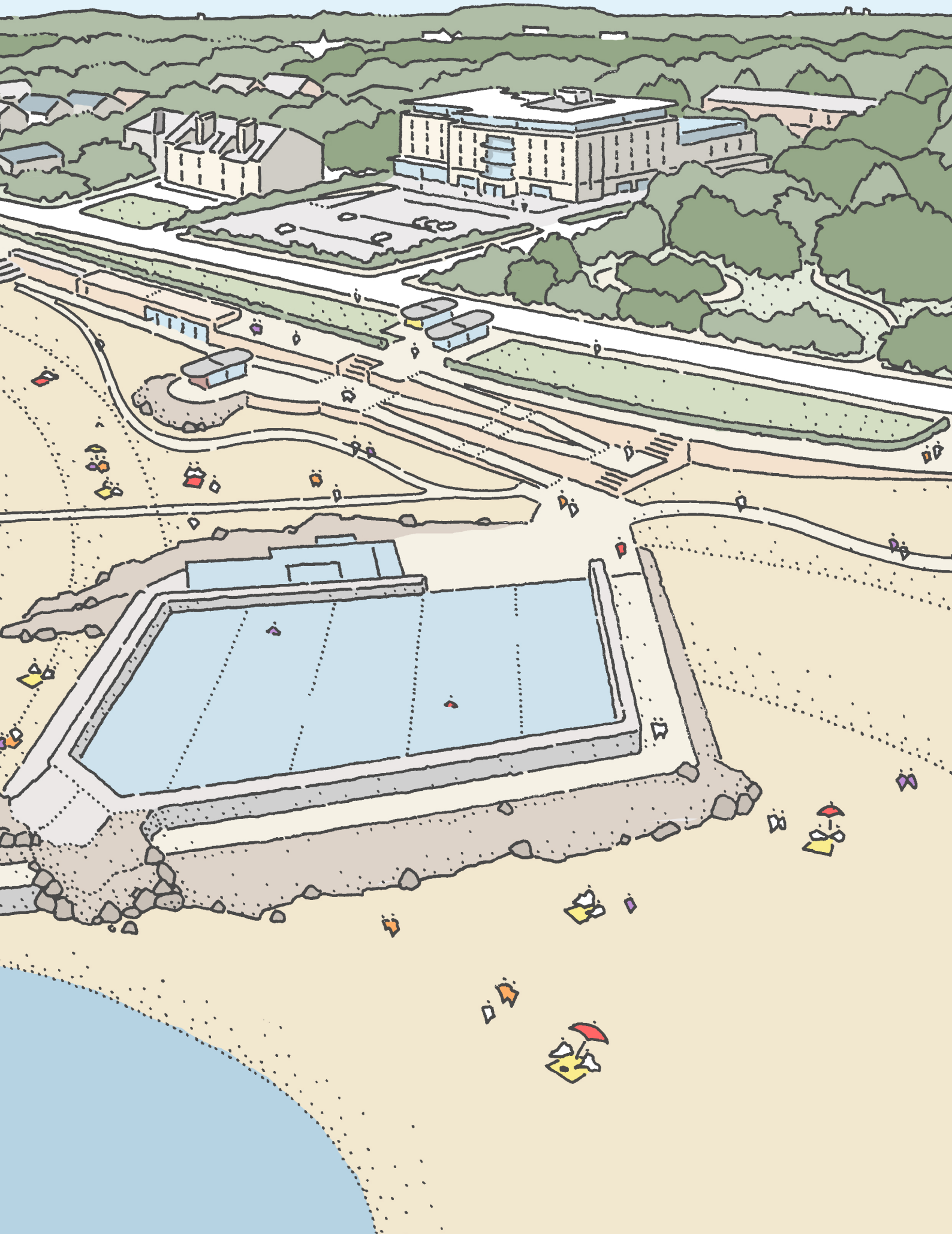




TIDAL POOLS

This design proposal focuses on the reinstatement and transformation of the tidal pools, with a strong emphasis on accessibility and inclusion. A key feature is a fully wheelchair-accessible ramp, providing seamless access from the promenade to the tidal pools, the beach, and the Jungle Café. In addition, a new boardwalk on the beach would offer level access into the sea, making the area more enjoyable and inclusive, particularly for people with limited mobility and wheelchair users.

As a precedent, the Dún Laoghaire Baths were presented, showcasing how thoughtful design can integrate with existing structures while drawing inspiration from the character of the promenade.



"Better and more showers on Ladies beach"

"Minimal kerbside parking in exception of disabled spaces"

"I love the tidal pool idea"

SUMMARY OF FEEDBACK ON TIDAL POOLS PROPOSAL

STRONG SUPPORT FOR TIDAL POOLS AND SWIMMING ACCESS

There was broad support for reinstating the tidal pools, seen as a valued facility from the past. Respondents wanted a pool deep enough for proper swimming, with suggestions for a 25m short-course to support sea training. Several noted the need for a family-friendly swimming area, not just deep water, and safe access for less confident swimmers.

The return of the raft was mentioned repeatedly and fondly, seen as a popular feature for teenagers.

ACCESSIBILITY AND INCLUSION

Access for people with limited mobility or using wheelchairs, frames or beach buggies was a consistent theme. Ramps and boardwalks were welcomed, but must avoid steep gradients.

Boardwalks extending into the sea received positive support, especially for allowing new views and access to the water. Some felt boardwalks on Ladies Beach would not be viable due to storm exposure and suggested locating them east of Ladies Beach instead.

FACILITIES

There were repeated calls for improved amenities: free toilets, drinking taps, baby changing, and especially more showers, with a particular focus on Ladies Beach. Existing infrastructure such as railings, lighting, and shelter roofs were reported to need repair.

The Dún Laoghaire Baths were seen as a positive precedent for integrating access and design into an existing promenade.

COMMUNITY, PLAY AND EVERYDAY USE

Participants wanted the area to serve not just swimmers but also families, teenagers and young people. Suggestions included basketball, volleyball, tennis courts, and goalposts being located within the vicinity, perhaps in Salthill Park. Some also called for performance space and cultural programming, including busking and bandstands.

Murals painted by local and disabled artists on Ladies Beach were appreciated but noted to be weather-damaged. More cultural and artistic opportunities were encouraged, with mention of engaging groups like 'A Playful City'.

"Put the board walk on the beach east of Ladies beach, next to the pools"

"Family accessible swim area"

"Tidal pool is a wonderful idea and was a great facility when I was a child"

TRANSPORT, SAFETY AND ENVIRONMENT

There was general support for reducing curbside parking, except for disabled spaces, to allow space for flood defences, SuDS, cycle paths and active travel. Some noted the missing pedestrian crossing at Ladies Beach, which had been promised but not delivered.

Nature-based flood defences were preferred over rock armour, with an emphasis on aligning climate resilience with the coastal setting.

DESIGN CONSIDERATIONS

Based on this feedback, the following considerations should inform the design:

1. PRIORITISE ACCESSIBILITY

- Ensure ramps meet best-practice gradients and standards.
- Provide beach access for all users, with boardwalks in storm-resilient locations, which can be accessed by people with limited mobility.

2. DESIGN INCLUSIVE SWIMMING INFRASTRUCTURE

- Include varied water depths for confident and less confident swimmers.
- Consider potential for a short-course tidal pool.

3. UPGRADE AMENITIES

- Provide clean, free public toilets, showers, taps and baby changing facilities.
- Repair or improve shelters, railings, and lighting, especially at Ladies Beach.

4. FOSTER COMMUNITY USE AND PLAY

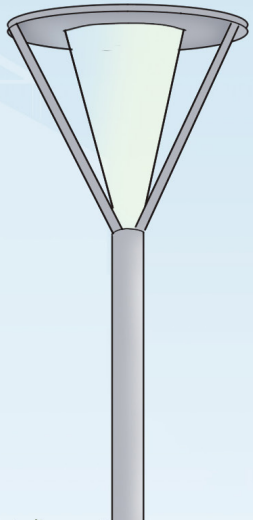
- Consider areas where more sports and play can take place, in addition to opportunities for cultural events and performances.
- Maintain and improve existing public art and explore new installations.

5. SUPPORT SUSTAINABLE AND SAFE TRAVEL

- Consider rationalising the parking along the promenade, except for accessible bays.
- Integrate pedestrian crossings where needed.

6. USE NATURE-BASED COASTAL PROTECTION

- Explore planting and natural landscaped flood defences to support biodiversity and flood mitigation.



TOFT PARK: FLOOD MANAGEMENT

The proposal for Toft Park presents an innovative response to flood mitigation by integrating infrastructure with public space and play. Rather than relying solely on hard flood defences, this concept leverages the functional requirements of the flood scheme to enhance the public realm. The illustration shows a sculpted landform or mound that offers space for natural play, including slides, bark-covered climbing zones, and stone features, all designed to be robust and inviting for children. New lighting is proposed to increase safety, while extensive tree and meadow planting aims to boost biodiversity, introducing habitats for native wildlife. The proposal demonstrates how infrastructure can deliver wider environmental, social and recreational benefits, creating a space that is both resilient and welcoming.





"Lovely to see a playful and inviting use of this space"

"Love natural play areas"

SUMMARY OF FEEDBACK ON FLOOD-INTEGRATED PLAY PROPOSAL AT TOFT PARK

STRONG SUPPORT FOR REIMAGINING THE SPACE

The majority of attendees responded enthusiastically to the proposal. The transformation of a currently underused grass area into a dynamic, multi-functional park was warmly welcomed. Several people described the design as "very nice," "lovely," or "great," and particularly valued the playful and inviting quality of the proposed interventions. It was seen as a strong example of making use of an otherwise overlooked area for something enjoyable and meaningful.

The integration of natural elements like trees, bark, and stone in play features was seen as attractive and beneficial, especially for families and toddlers.

INCLUSION, ACCESSIBILITY AND SAFETY

One attendee pointed out that the park is difficult to access due to flood gates and stiles that limit entry. Ensuring inclusive access should be a priority.

Suggestions to improve the space included cycle lanes, smooth paths suitable for roller skating and accessible walkways so that the park can be used by people of all ages and abilities.

MATERIALS AND DESIGN

People liked the informal, bark- and stone-based features, and there were additional suggestions which included tunnels, climbing areas, and a desire to bring back the "funny mirrors" that once existed in Salthill.

Seating and planting were seen as valuable for family use, providing places to rest and for small children to safely explore nearby. There was a desire for playful elements that feel integrated with nature but still offer challenge, interest, and comfort.

Wind was noted as a challenge at this exposed site, and participants suggested incorporating natural windbreaks into the design to increase comfort, especially for young families and year-round use.

PARKING AND WIDER ACCESS

Although the focus was on flood resilience and play, some feedback addressed parking pressures in Salthill. One person highlighted that Salthill needed another car park to support the businesses, whereas another highlighted the need for the car park, west of Toft Park, to be used by Salthill residents, as it is currently being used by people going to the cinema.

*"Tunnels and climbing areas.
Kids love tunnels"*

*"Great idea.
Mature trees!"*

DESIGN CONSIDERATIONS

Based on this feedback, the following considerations should inform the design:

1. ENHANCE ACCESSIBILITY

- Consider how flood gates and stiles could be reconfigured to allow inclusive access.
- Ensure smooth, continuous paths suitable for buggies, wheelchairs, and roller skaters.

2. STRENGTHEN NATURAL PLAY FEATURES

- Include playful landforms using bark, stone, and timber and other informal elements that support imagination and adventure.

3. IMPROVE COMFORT AND SAFETY

- Install lighting along key routes.
- Use landscape elements such as planting or landform to act as natural windbreaks.
- Provide seating and shaded/rest areas.

4. SUPPORT BIODIVERSITY AND ENVIRONMENTAL GOALS

- Maximise the use of native tree and plant species to support local wildlife.
- Use the flood mound as an opportunity to introduce habitat complexity.

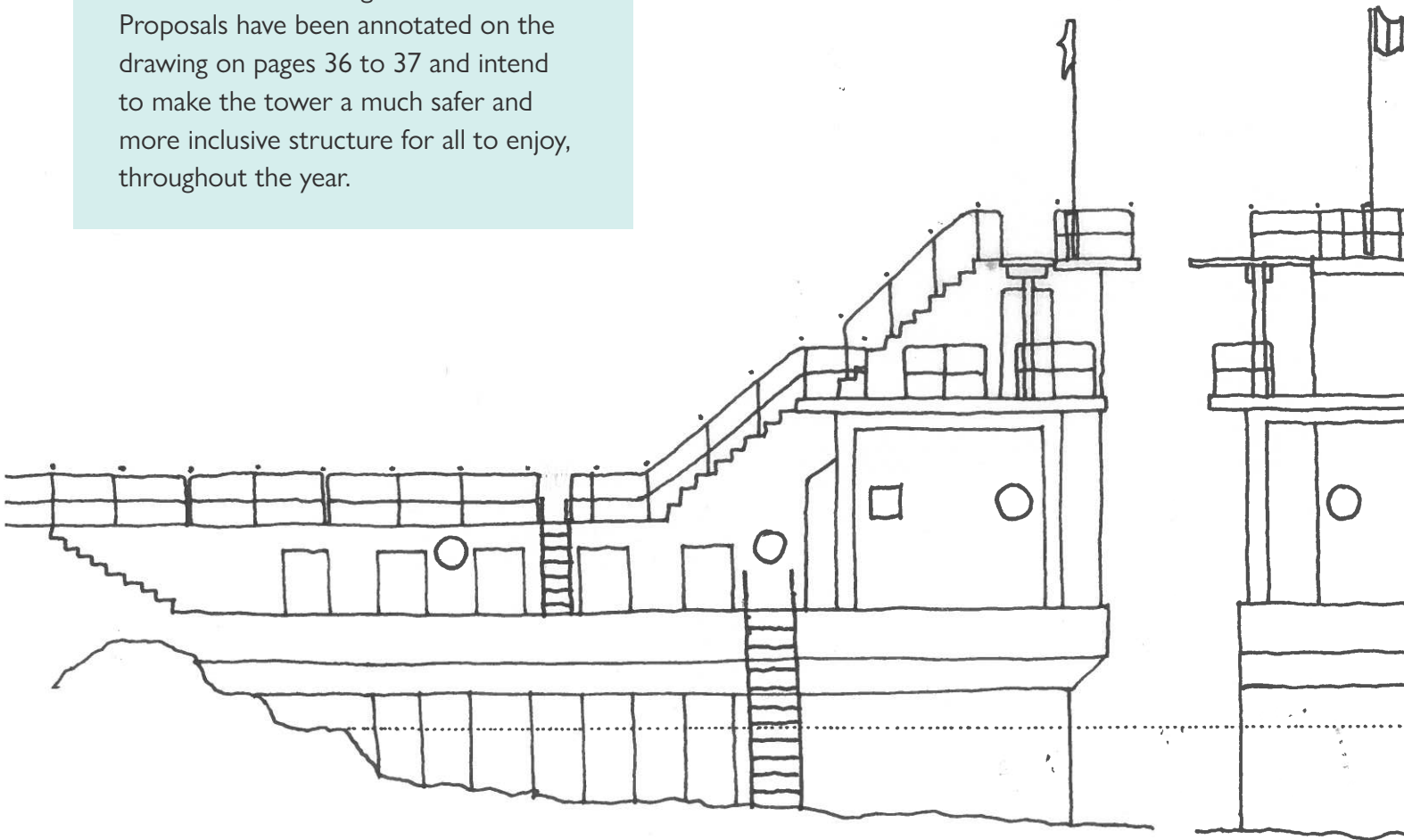
6. CONNECT THE PARK TO THE BROADER NETWORK

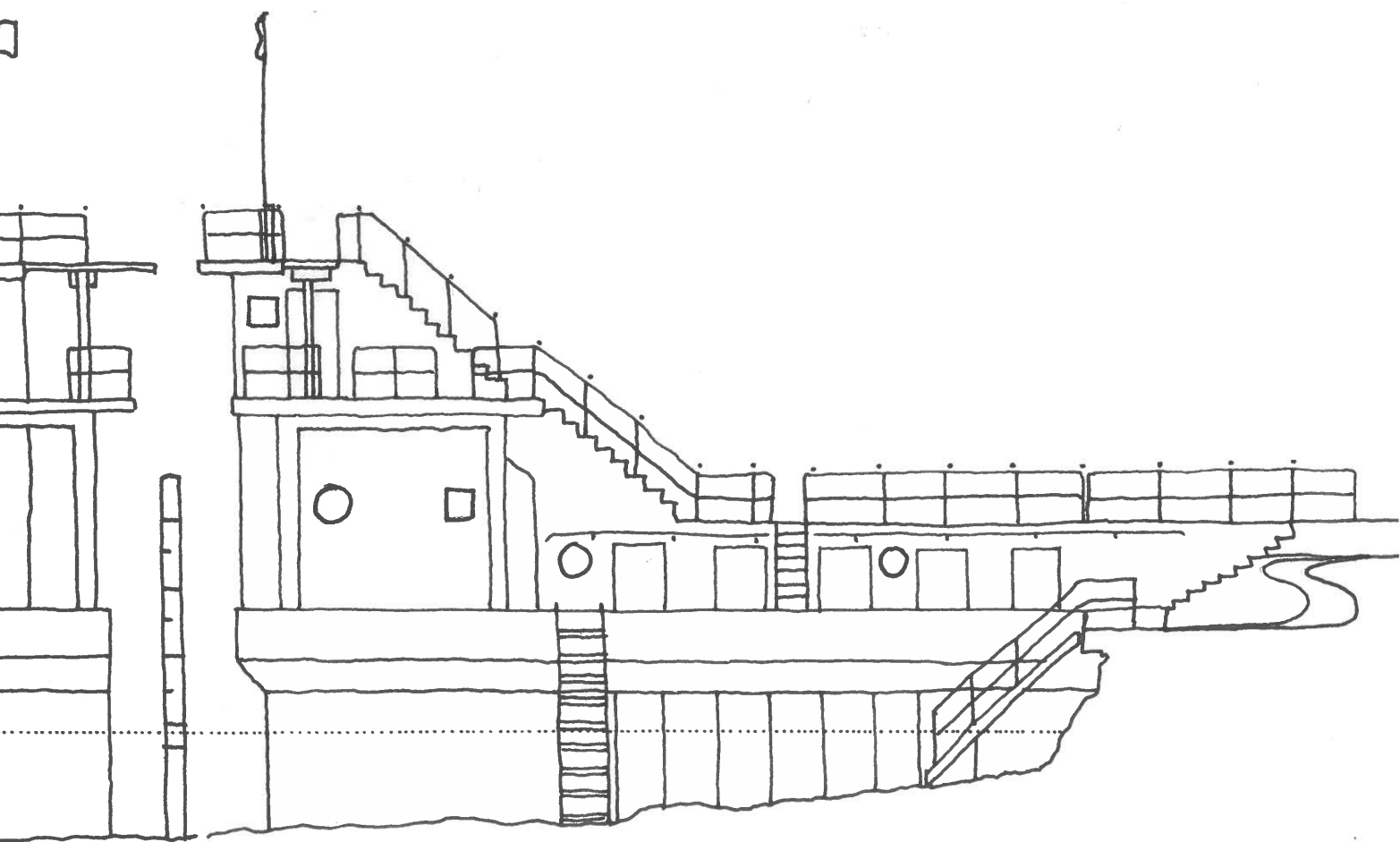
- Integrate cycle lanes to make the park part of an active travel network.



BLACKROCK DIVING TOWER

This proposal intends to sensitively renovate and enhance Blackrock Diving Tower, whilst retaining its iconic character. Proposals have been annotated on the drawing on pages 36 to 37 and intend to make the tower a much safer and more inclusive structure for all to enjoy, throughout the year.

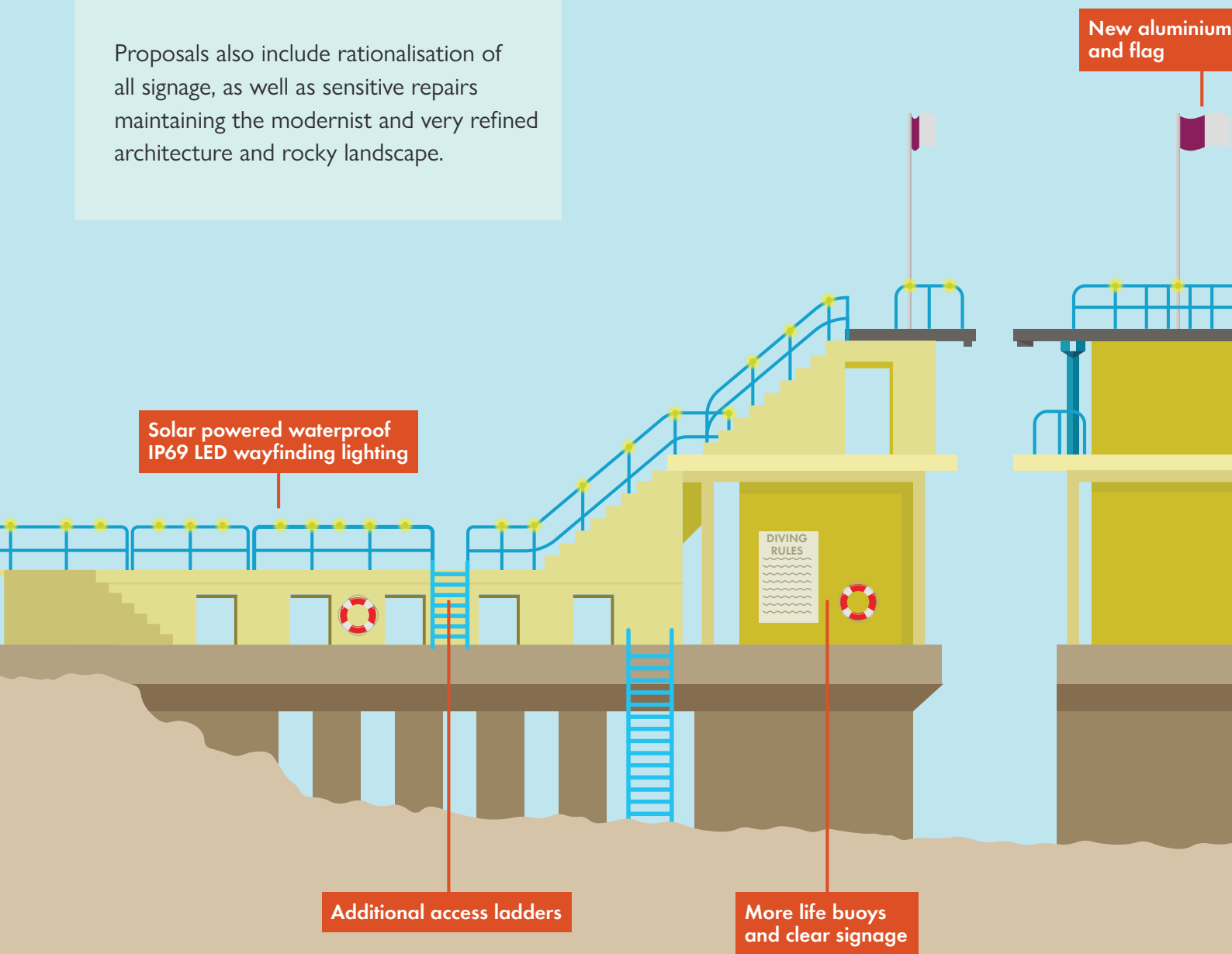




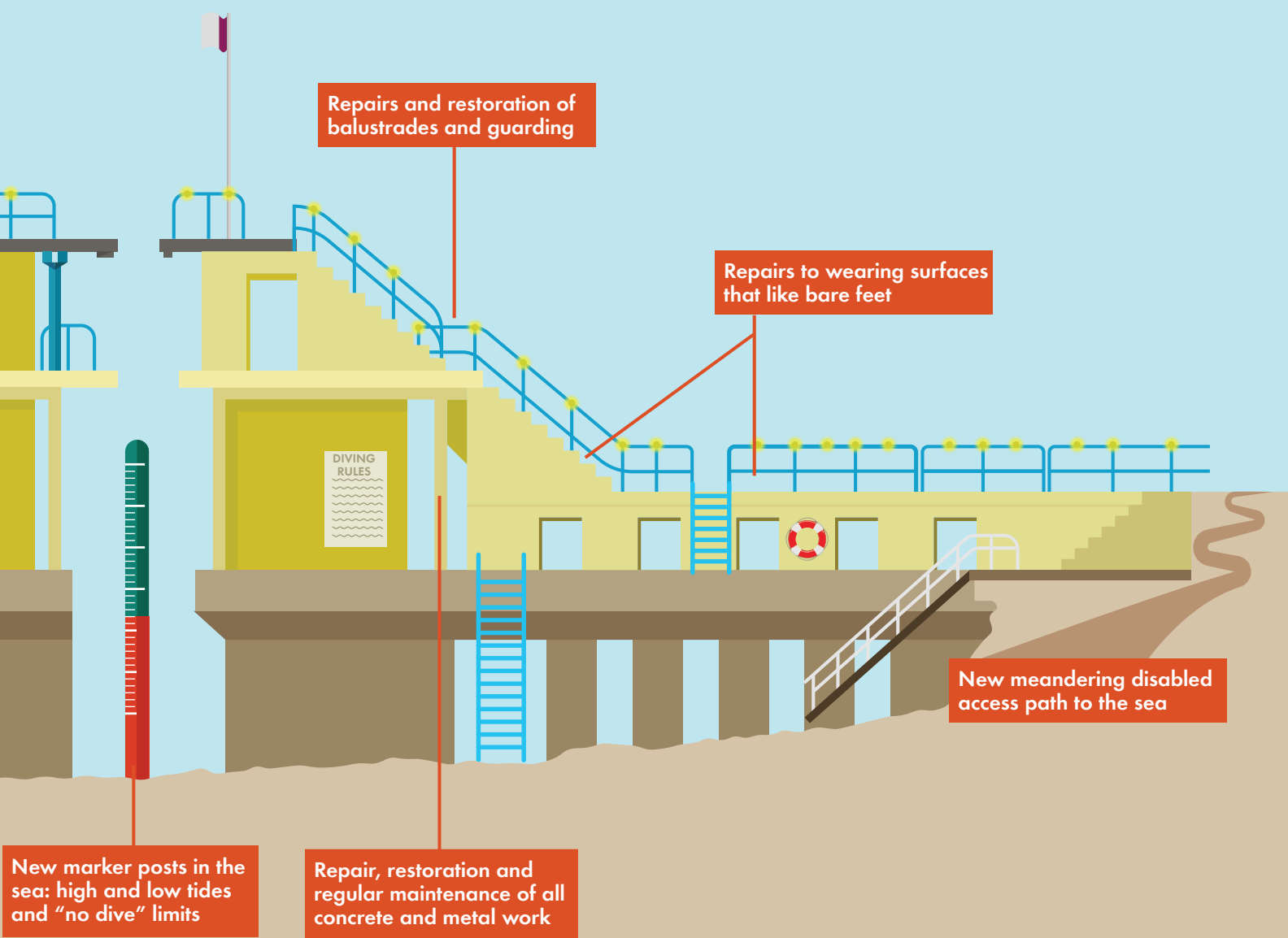


BLACKROCK DIVING TOWER

Proposals also include rationalisation of all signage, as well as sensitive repairs maintaining the modernist and very refined architecture and rocky landscape.



flagpole



"Access for all to get into the water"

"Pls be mindful of the ecosystem"

"More showers please!"

SUMMARY OF FEEDBACK ON PROPOSALS FOR BLACKROCK

SENSITIVE, CONSERVATION-LED APPROACH

There was strong support for a light-touch restoration of the diving tower, which is considered an iconic structure. Attendees welcomed the retention of the essential character of the structure, including the distinctive yellow paint. Some participants asked whether the diving boards could be re-instated.

ACCESSIBILITY

Proposals to improve the accessibility of the tower and surrounding area received strong support. Careful consideration of the positioning of a support rail, and incorporating adequate width for accompanied visits for those with impairments were highlighted.

MANAGEMENT

A number of comments related to lifeguarding - asking for lifeguard presence beyond the peak season if possible. There was some discussion about the management of the tower at busy times, with congestion and over-crowding sometimes creating issues. Signage to provide clear advice on when it is safe or unsafe to use the tower was supported.

IMPROVEMENTS TO FACILITIES

Feedback indicated that people would like to see investment in the changing rooms, including provision of additional showers. A number of attendees mentioned the raft which was formerly moored close to the tower. There would be support for the reinstatement of the raft, to provide a refuge for less experienced swimmers.

ENVIRONMENTAL CONSIDERATIONS

It was noted that any work to the tower could have an impact on the marine environment. This could include sea grasses and the ecosystems they support. Care should be taken accordingly.

"Delighted to see a light touch approach to preserving the tower"

"Protect seagrass during construction"

"Bring back diving boards on the lower level"

DESIGN CONSIDERATIONS

Based on this feedback, the following considerations should inform the design:

1. EMBRACE A CONSERVATION-LED APPROACH

- Adopt a light-touch approach which seeks to retain the overall character and identity of Blackrock Tower.

2. IMPROVE ACCESSIBILITY AND FACILITIES

- Careful integration of accessibility features to enable safer access for all. Building on the first consideration, seek to work with the existing character of the area around the tower.
- Consider opportunities to enhance changing facilities.
- Review whether other enhancements (e.g. re-introduction of the raft) are appropriate.
- Assess supporting management of the facility, including lifeguarding arrangements.

3. CONSIDER ENVIRONMENT AND ECOLOGY

- Early consideration of environmental impact and ecological sensitivity as part of any structural proposals.



PROMENADE FLOOD RESILIENCE AND PUBLIC REALM PROPOSAL

This proposal presents a reimagining of a section of Salthill Promenade, adjacent to Quincentennial Park / Circle of Life Commemorative Garden. The design integrates flood resilience measures with a stepped seating area that echoes the natural character of the rocky shoreline. The steps offer places to gather, sit, and view the sea, reminiscent of the old “lazy wall” tradition. A cycle lane is proposed along the seafront, while existing seafront parking is retained, though reorganised to optimise space. This includes a tightened carriageway, defined parking bays, and possible realignment at pinch points to enhance both movement and safety.





"Spaces for teen girls to hang out all times and weathers"

"Remove seaweed and improve access"

"Great to see cycle path"

SUMMARY OF FEEDBACK ON PROMENADE FLOOD RESILIENCE AND PUBLIC REALM PROPOSAL

SUPPORT FOR ENHANCED PUBLIC SPACE

People welcomed the idea of improving the public realm while addressing flood resilience. The stepped seating areas were praised as a clever and attractive way to animate the seafront, particularly for their social function. It was noted that this seating echoed the familiar 'lazy wall' tradition of sitting along the promenade.

The proposal's intent to tighten the road space and enhance the pedestrian experience was appreciated, with respondents supporting a better balance between cars, cyclists, and people on foot. Suggestions like incorporating BBQ areas, splash pads, picnic spots, and exercise equipment reflected a desire for the promenade to become a more active and versatile space, suitable for all ages and activities.

INCLUSIVITY AND MOBILITY CONSIDERATIONS

Several attendees highlighted the importance of ensuring the space is fully inclusive. While the stepped seating was seen as a welcome feature, questions were raised about accessibility for older people and those with limited mobility.

There were requests for higher or alternative seating options to support those unable to use low steps, and handrails were suggested to improve safety on the seating and access paths.

It was noted that the promenade should incorporate spaces for teenage girls, which feel safe and welcoming for them in all weathers and at different times of day.

TRANSPORT AND CYCLE SAFETY

The proposed cycle lane was positively received, particularly as part of a wider desire to see improved cycling connectivity between Salthill and Barna. However, respondents raised concerns about safety where the cycle lane intersects with on-street parking. There were worries about car doors opening into the path, people unloading beach gear, and children crossing the lane. Participants felt that cycle lanes should be fully separated from both traffic and parking areas to encourage safe use.

Car parking on the seafront generated mixed views. While disabled parking on the sea side was strongly supported as essential for safety and access, several people questioned the need for general seafront parking. Suggestions to relocate parking to the opposite side of the road was highlighted. There were broader concerns that free parking encourages car use, with a call to prioritise active travel and reduce traffic along the prom.

"Exercise equipment and playground on prom"

"Splash pad area a great idea"

"Lovely solution to flood defences"

MAINTENANCE

Maintenance issues were flagged, such as the need to remove seaweed and ensure regular presence of a litter warden to keep the area clean.

DESIGN CONSIDERATIONS

Based on this feedback, the following considerations should inform the design:

1. CELEBRATE THE SEA WHILE ENSURING ACCESSIBILITY

- Consider integrating alternative seating heights alongside stepped areas, and handrails, to cater to elderly and mobility-impaired users.
- Provide sheltered or inviting areas for teenagers, specifically girls.

2. DELIVER SAFE, SEPARATED CYCLE INFRASTRUCTURE

- Design cycle lanes that are physically separated from parking bays and pedestrian areas to prevent conflict and potential hazards.

3. PARKING STRATEGY

- Retain disabled parking bays along the promenade.
- Explore relocation of some parking to the landward side of the road.
- Consider paid parking to manage traffic volumes.

4. ACTIVATE THE PROMENADE WITH PLAY AND AMENITY

- Incorporate interactive features such as splash pads, playground equipment, fitness zones, or public art.
- Consider whether picnic and BBQ areas would be appropriate along the promenade, or in other green spaces in Salthill, such as Salthill Park.

5. IMPROVE COMFORT AND CLEANLINESS

- Consider a lighting strategy for the promenade to improve evening safety and ambience.
- Review the management plan of the promenade, to address litter management.





BEACH STREET

This illustration shows a reimagined view of the Threadneedle Road roundabout, looking east towards Salthill. It proposes a bold transformation from a car-dominated junction to a vibrant, people-friendly “Beach Street”, which prioritises walking, cycling, and slowing traffic as people arrive into Salthill.

The design includes the removal of the roundabout and the creation of an accessible, level street that welcomes people of all ages and abilities. The primary feature is the use of brightly coloured paving, which celebrates arrival and signals to drivers that this is a shared, pedestrian-priority space. These surface treatments could be created with local schools and artists and evolve over time, reinforcing community identity. Parking is retained in a more efficient layout, alongside new signage and a dedicated cycle path.





BEACH STREET

This second image offers an alternative view of the same proposal, keeping the distinctive pedestrian crossings in vibrant colours but using a simpler, asphalt surface for the main carriageway. This variation aims to maintain the visual identity of the 'Beach Street', while potentially offering greater legibility for drivers and pedestrians.

"Yes to 20km per hour please!"

*"Consider seating at green space
beside bus stop – to enjoy view"*

*"Love the bunting –
sense of fun and place"*

SUMMARY OF FEEDBACK ON BEACH STREET

ARRIVAL EXPERIENCE & STREETScape

There was strong support for replacing the roundabout with a junction which prioritised pedestrians better. Attendees welcomed this as an opportunity to create a safer, more enjoyable space for all users. Participants valued the proposal's emphasis on fun, slow living, and accessible design that connects Salthill with the sea.

Some practical concerns were raised about street width. Others asked whether the new design would be wide enough to accommodate emergency vehicles.

The visual additions, such as bunting and signage, sparked mixed opinions. Some saw these as playful and uplifting, helping define Salthill's sense of place, whereas one person was less enthusiastic, assuming they were illustrative or concerned they could date or clutter the space.

GREEN AND SOCIAL SPACE

There were suggestions to introduce seating, picnic areas and mature trees. More trees were desired, with a participant highlighting that Quincentennial Park is currently the only space that offers large shade trees. A number of people requested covered seating or sheltered spaces, especially for young people or those using the nearby bus stop.

WALKING AND CYCLING SAFETY

A frequent theme was the need for improved separation between cars, pedestrians, and cyclists. There was widespread support for the new cycle path, but participants felt that it should be physically separated from vehicles. Raised crossings were suggested as both a calming measure and a tool to help when cyclists and pedestrians share space.

Many praised the bright, colourful crossings for drawing attention and encouraging slower driving, but others expressed concern that visibility and road markings might become confusing without clear distinctions between road and path.

PARKING AND ACCESS

While most accepted a reduction in parking to improve public space and safety, others still saw the need for nearby car access, especially for disabled users and older people. Several suggested moving general parking to the opposite side of the street, keeping disabled bays closer to the promenade. There were also suggestions to minimise and charge for parking,

One respondent raised the possibility of underground parking beneath Salthill Park, and another raised the opportunity for removing the green space (located left of the image), and replacing it with car parking.

"Lovely – like the plain road – easy to distinguish crossing"

"This is fab. A solution for people with visual impairment"

"Love the images on the crossings – playful and a great signal to drivers"

PAVING TREATMENT: FULL COLOUR CONCEPT

Many attendees responded positively to the fully coloured road surface, seeing it as bold, playful, and reflective of Salthill's seaside character. Several people felt the colour helped signify pedestrian priority, slow traffic down, and enhance the arrival experience.

COLOURFUL CROSSINGS ONLY

Others preferred the toned-down approach, where only the pedestrian crossings are brightly coloured. One or two raised concerns that too much colour might reduce visual clarity, especially for people with visual impairments or those unfamiliar with the area. This version was appreciated for being easier to interpret, especially in terms of distinguishing crossings from driving areas.

DESIGN CONSIDERATIONS

Based on this feedback, the following considerations should inform the design:

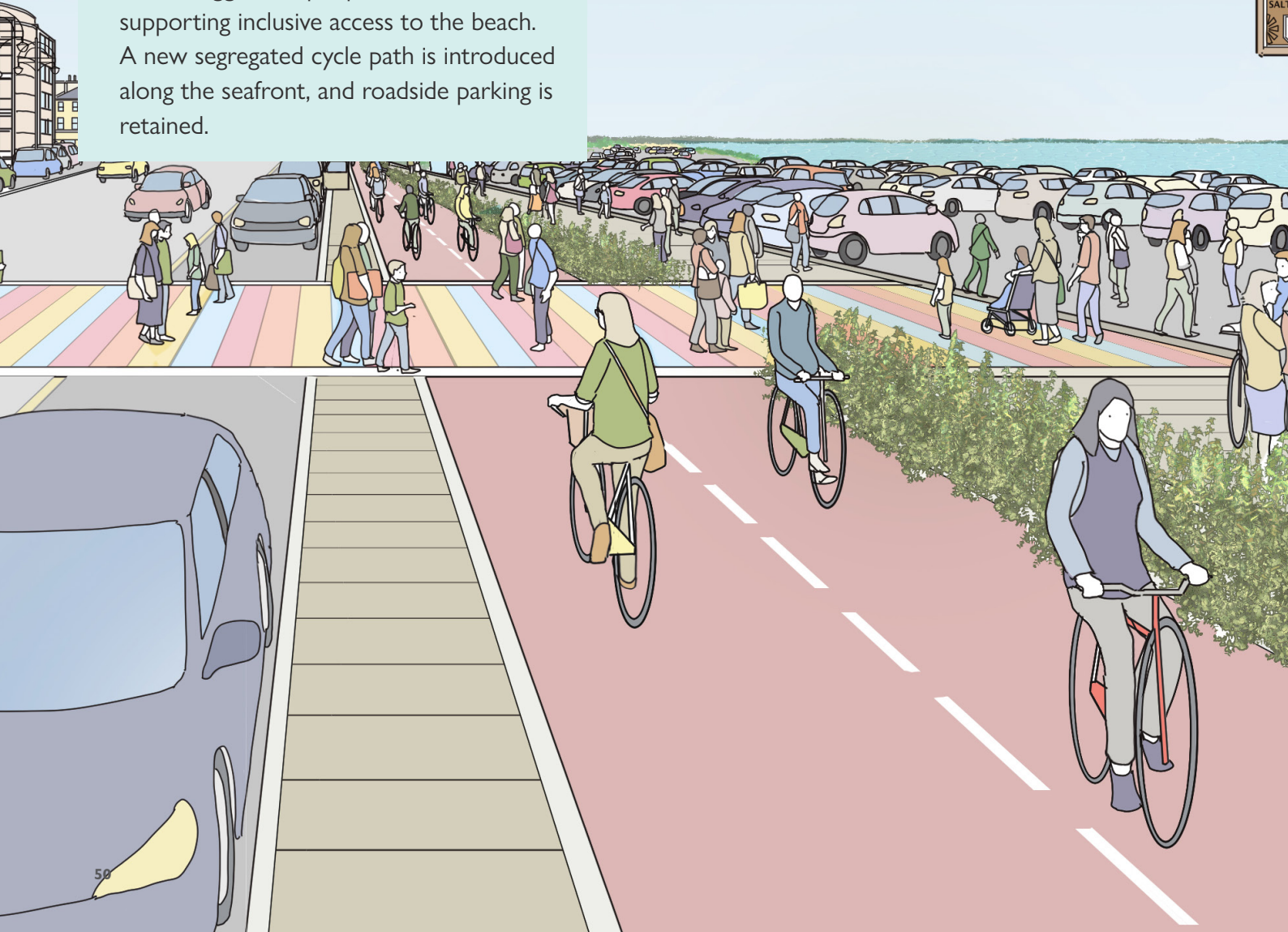
1. CREATING AN INCLUSIVE STREET

- Ensure the purpose of colourful paving is clearly communicated. If full-surface colouring is pursued, consider contrast zones or textured finishes to assist those with visual impairments. Alternatively, consider vivid crossings paired with simple surfacing for legibility.
- Ensure the road prioritises disabled-friendly design, through the use of level access, safe and slow crossings, accessible seating and dedicated disabled parking close to the sea.



AN ACTIVE SALTHILL

This proposal aims to celebrate active travel by creating a balanced and inclusive space along the promenade where walking, cycling and cars can safely co-exist. The majority of the Salthill car park would be retained, but some parking spaces would be reallocated to provide a new cycling hub, potentially featuring a bike shop, beach equipment rental, and a café. This space could also offer adaptive beach buggies for people with disabilities, supporting inclusive access to the beach. A new segregated cycle path is introduced along the seafront, and roadside parking is retained.





"Don't block the sea view, could be on Leisureland side"

"Could the city bike scheme be in place of the bike shop?"

"Wow! Room for everyone to use safely"

SUMMARY OF FEEDBACK ON CREATING AN ACTIVE SALTHILL

CYCLE HUB CONCEPT

The concept of a cycle hub received a positive response. People appreciated that the design offered space for everyone, and the hub was seen as a practical and welcoming facility. Several respondents liked the idea of it being multi-use.

Some people, however, raised the issue of protecting views of the sea and ensuring the waterfront remains open. One person felt the cycle hub would be better placed inland, freeing up the seafront for public use and views, and others suggested using an existing underused site for the cycle hub, such as the vacant tourist information building located adjacent to Salthill Aquarium.

BALANCING PARKING AND PRIORITIES

Parking generated a diverse range of views. Some strongly supported reducing or relocating surface-level parking, noting the abundance of car parks in the area and suggesting these could be consolidated, or relocated to less sensitive spaces. Suggestions included making use of Bailey Point for car parking. Others felt retaining some accessible parking was essential, especially for disabled access and families.

IMPROVING PUBLIC TRANSPORT TO REDUCE CAR DEPENDANCE

There was a general consensus that public transport needed improving, with people highlighting the need for a direct and reliable bus service between Salthill, the city, and Knocknacarra.

SAFETY AND USER EXPERIENCE

Several comments focused on safety and legibility of users. Whilst there was an appreciation of clear surface treatments that distinguish between modes, others showed support for coloured pedestrian crossings, as visual cues for drivers to slow down. There was also a suggestion for green verges as buffers between cyclists and pedestrians. A few people suggested limiting signage clutter, and others mentioned the need for better litter control during busy evenings.

"Cycle hub is a great idea and using it for more options, like buggies for disabled beach access"

"Cycle hub to old tourist office site"

"The use of colour on the (hopefully abundant) pedestrian crossing are a great visual aid for drivers to slow down as well as looking nice"

DESIGN CONSIDERATIONS

Based on this feedback, the following considerations should inform the design:

1. CYCLE HUB

- Design a flexible, welcoming cycle hub that supports a wide range of users, including tourists, cyclists, families and people with disabilities, potentially incorporating café use, rentals and accessible storage.
- Consider appropriate options for the cycle hub - e.g. an underused site if this better serves views and accessibility, or as shown in the illustration.

2. PUBLIC TRANSPORT & PARKING

- Consider the need for road widths to accommodate buses, cars, cyclists and pedestrians, with bus stops located at key destinations.
- Consider the best location for disabled parking bays and assess how parking can be better located to help everyone to make the most accessible use of the promenade.

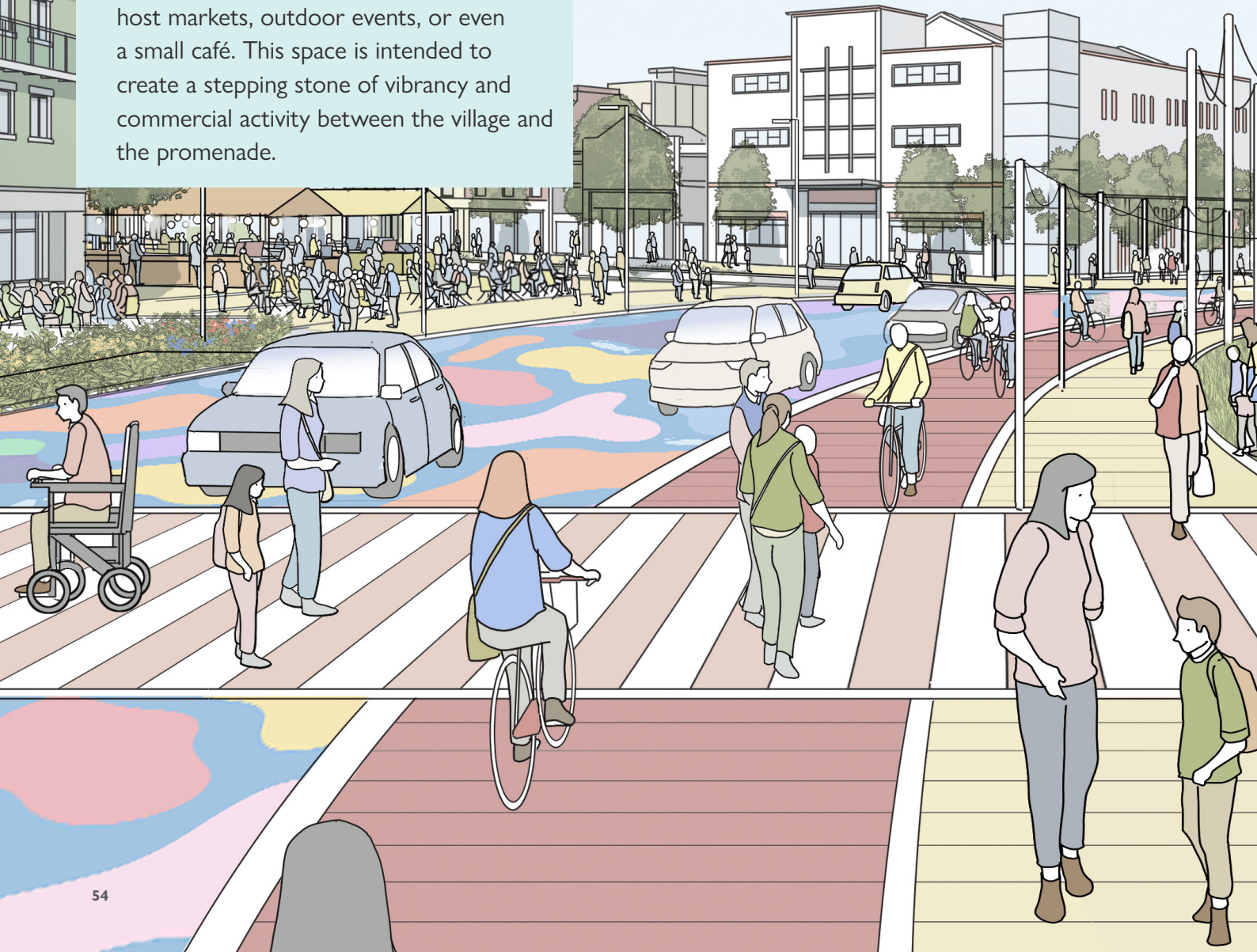
3. DESIGN FOR ALL AGES AND ABILITIES

- Prioritise universal accessibility, including cyclists, wheelchair users, and those with visual impairments or mobility needs. Design the cycling hub to support disabled beach access and potentially storage of disabled beach buggies.
- Ensure the design of crossings and routes are intuitive and inclusive.



VILLAGE APPROACH

This proposal rethinks the connection between Salthill Village and the promenade and coast, by removing the D'Arcy Roundabout. The design continues the "Beach Street" concept, transforming the existing road into a place that supports walking, cycling, and public life. The green space along the promenade is re-imagined as a flexible amenity space, which could host markets, outdoor events, or even a small café. This space is intended to create a stepping stone of vibrancy and commercial activity between the village and the promenade.

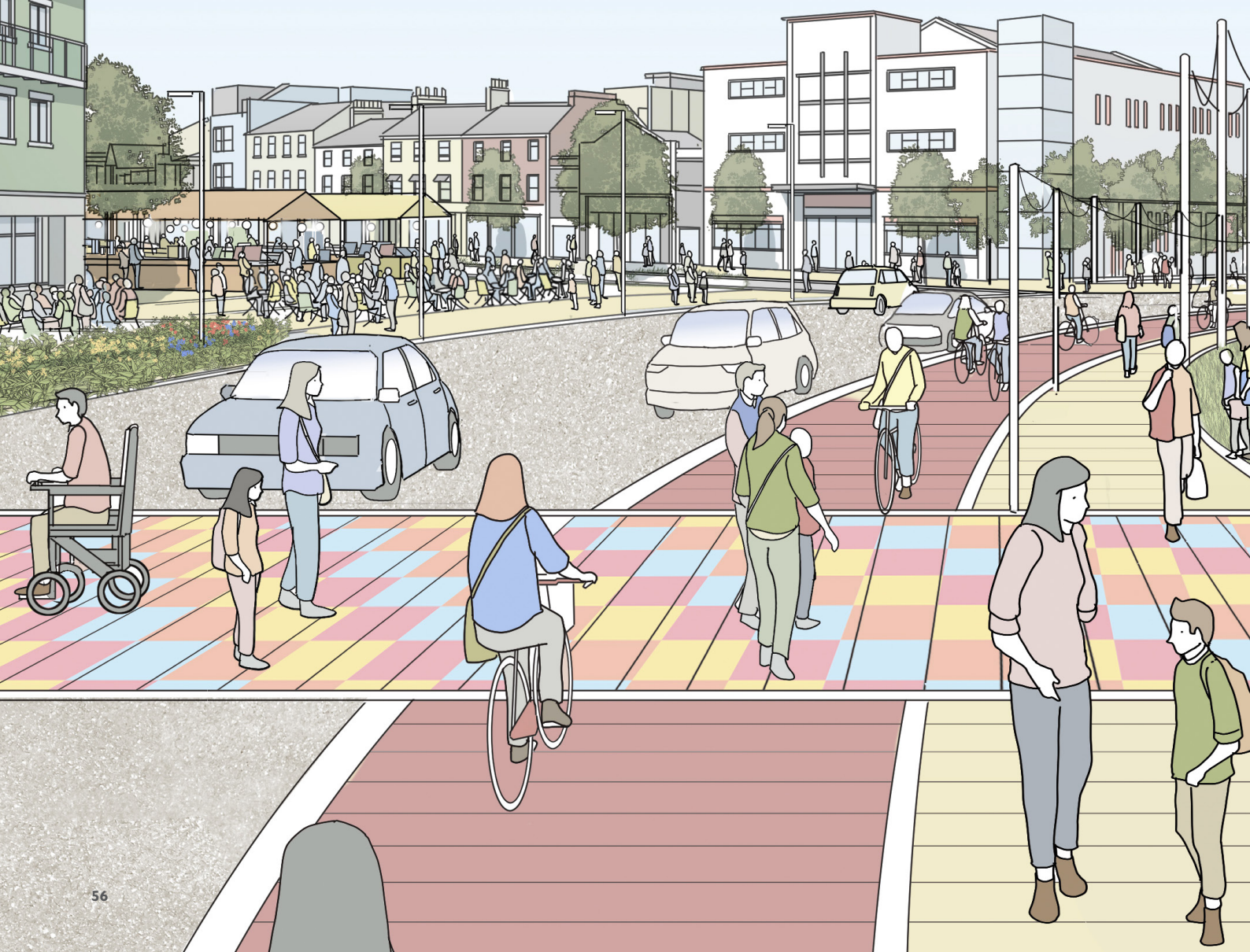






VILLAGE APPROACH

This image shows an alternative version of the scheme. It retains the playful, colourful pedestrian crossings while simplifying the main road surface with asphalt. The aim is to provide visual cues that prioritise pedestrians while ensuring legibility and ease of movement, particularly for those with visual impairments.

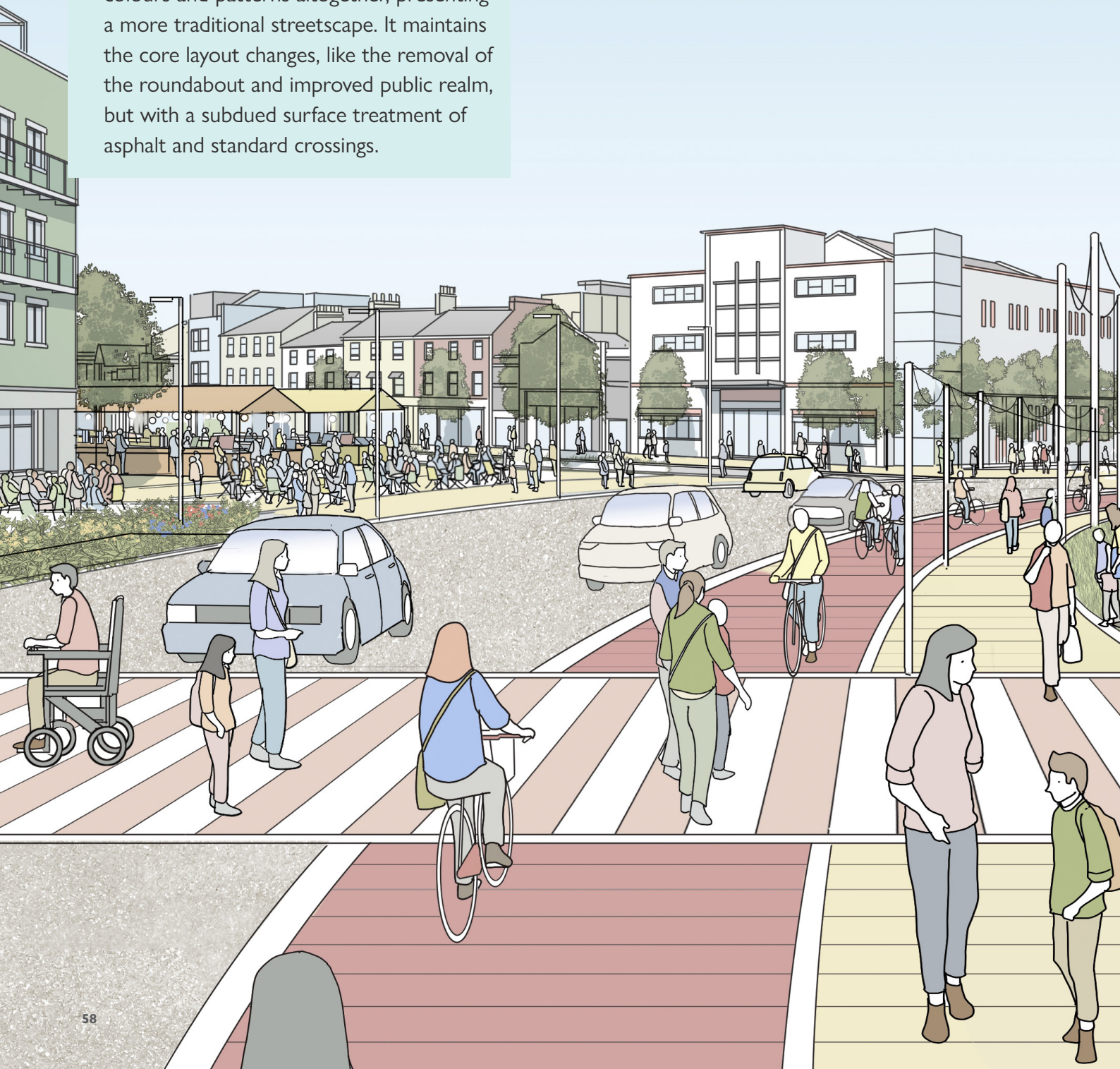






VILLAGE APPROACH

This third version removes the bright colours and patterns altogether, presenting a more traditional streetscape. It maintains the core layout changes, like the removal of the roundabout and improved public realm, but with a subdued surface treatment of asphalt and standard crossings.





"Need specific (free) spaces for teen girls to hang out in all weathers."

"Outdoor cinema – flexible event space"

"LED Light installations on crossings"

SUMMARY OF FEEDBACK ON THE VILLAGE APPROACH

REMOVING THE ROUNDABOUT AND RECONNECTING THE VILLAGE

Across all three images, there was strong support for removing the D'Arcy Roundabout. Participants saw this as a vital opportunity to stitch the village and promenade back together, encouraging footfall and public life. The roundabout was described as a barrier, and its removal was associated with better access, traffic calming, and a stronger sense of place.

Several people celebrated the proposal's resemblance to a village square and welcomed the chance to bring more life to the area.

Participants also highlighted the importance of accessible design, particularly around safe pedestrian crossings, bus connections, and links for people with visual or mobility impairments.

GREEN SPACE/PUBLIC REALM

The green area next to the village generated a range of suggestions. People supported ideas for making it a more active and flexible space. Suggestions included: outdoor cinema or event space; an animal shelter; Market stalls which are community driven with local food producers; spaces for young people to gather, particularly teenage girls; play areas, exercise equipment, and running lanes; tree planting and seating, especially serpentine or shaded types.

A couple of comments desired preserving the open green space, to retain views and existing character. One person commented on whether another café in Salthill was necessary and noted that a civic community building would be more useful.

MOBILITY, SAFETY AND ACCESS

Improving public transport access was a frequent suggestion. Many saw better bus links, including a loop serving Knocknacarra and summer park-and-ride services, as essential to reducing car dependency and making Salthill more inclusive.

Several participants highlighted the impact of car dependency on social isolation, especially for those unable to drive. Others advocated for paid parking to discourage excess car use, while maintaining accessible parking for disabled users.

Cycle infrastructure received broad support, especially where it was protected from traffic. Clear separation of cyclists, pedestrians, and cars was desired, alongside suggestions to clarify shared spaces and enhance accessibility for wheelchairs and visually impaired users.

Raised crossings, floor-level lighting, and visual cues were popular ideas to help prioritise pedestrian movement.

"Yes to cycle infrastructure"

"Love the planting"

"Great to see removal of roundabout and enhanced urban realm spaces"

OPTION 1: FULLY COLOURED "BEACH STREET"

This version received the most enthusiastic support. People described it as joyful, creative, and full of life. Several loved the paint and called it transformative, a "village square" for all. The use of colour was seen as a powerful way to signal pedestrian priority and create a memorable arrival.

That said, some participants raised concerns about upkeep, fading paint, weathering, and how it might look over time if not well maintained. Some questioned whether the area would feel too busy or confusing for drivers and users with visual impairments.

OPTION 2: COLOURFUL PEDESTRIAN CROSSINGS ONLY

This variation was appreciated for its clarity. People liked the distinct crossings and the way they still offered colour and playfulness without overwhelming the street. The clear distinction between crossing points and road surface was considered helpful, especially for elderly people and those with disabilities.

OPTION 3: TRADITIONAL ASPHALT AND STANDARD CROSSINGS

Whilst participants still supported the layout improvements, no attendees commented on this image.

DESIGN CONSIDERATIONS

Based on this feedback, the following considerations should inform the design:

1. CELEBRATE COLOUR – BUT PLAN FOR LONGEVITY

- The visual accessibility of the colourful carriageway combined with coloured pedestrian crossings must be carefully analysed.
- Maintenance will be central to the success of the beach street concept: materials should be selected for durability and easy refresh.

2. A FLEXIBLE PUBLIC REALM

- The public realm should be designed to host markets and events, but there should also be times where the space can be left open for people to relax and socialise in with views out to the sea.

3. PEDESTRIAN PRIORITY

- Whether through crossings, lights, raised surfaces, or surface materials, people want to see clear, visual cues that this space prioritises pedestrians.



VILLAGE CENTRE

The proposal looks at how the public realm in Salthill Village could be redesigned to create a more welcoming community space that rebalances movement, access, and placemaking. Vehicular access is retained, but with reduced on-street parking to allow for cycle paths, and more generous social pedestrianised spaces.

This version shows how the space could host events, markets, or seasonal festivals.

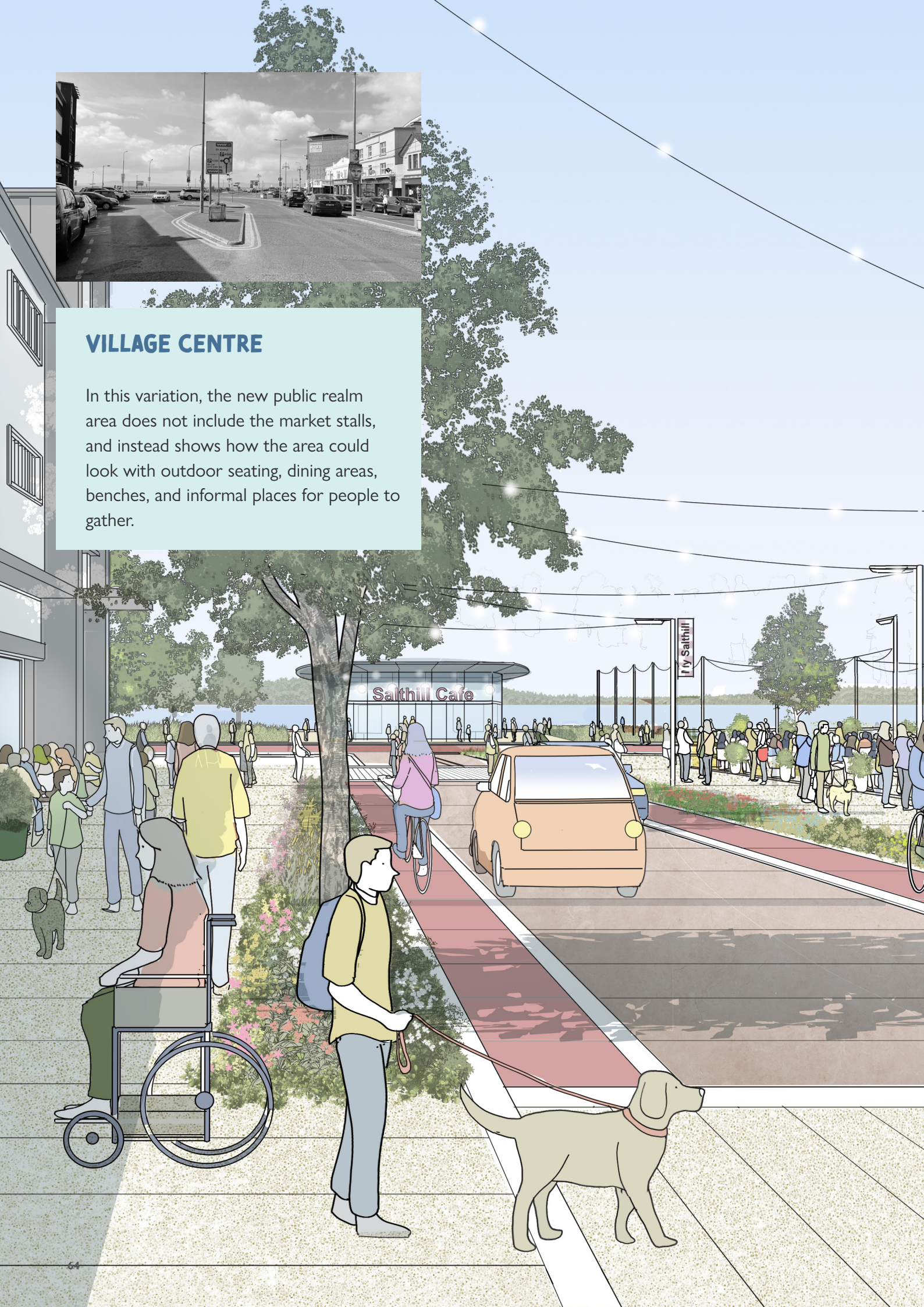






VILLAGE CENTRE

In this variation, the new public realm area does not include the market stalls, and instead shows how the area could look with outdoor seating, dining areas, benches, and informal places for people to gather.





"O'connors/pharmacy side in need of some parking"

"15 minute parking spots so you can pop into the bakery"

"Love all the place for people!"

SUMMARY OF FEEDBACK ON THE VILLAGE

ACCESSIBILITY, TRANSPORT AND TRAFFIC

There was continued support for improving sustainable access to Salthill through better bus services and cycling infrastructure.

A few people highlighted the need to retain car access, including short-term or set-down spaces, to ensure older people and those with limited mobility can access nearby amenities like pharmacies or cafés. The idea of relocating car parking outside the village centre, as seen in Freiburg, was mentioned as a possible solution.

It was noted that slower vehicular movement would allow for a more pleasant environment and might reduce the need for continuous segregated cycle lanes through the village core. The importance of safe, well-marked pedestrian crossings and seating near bus stops was also noted.

SHELTER AND WEATHER RESILIENCE

Participants in both scenarios highlighted the importance of weather resilience. There was a desire for shelters with seats, which would be particularly beneficial for young people, older residents, and anyone waiting for a bus or socialising in public space on rainy days.

PUBLIC SPACE FOR PEOPLE

There was broad appreciation for the increased space for seating, dining, and general gathering, with one comment simply stating: "Love all the space for people!". People wanted to see activity located on the existing sunny areas of the street, located at Sea Point, as opposed to the other side, which is less sunny and more commercial. One person desired green trees in the space. There was not a clear distinction or number of comments indicating whether people preferred the market stalls as opposed to the open, social seating space, indicating the need for the space to remain flexible and adaptable.

"Opening village to the prom"

"Seats in the shelters"

"Have a shopfront design code to improve signage in the village"

DESIGN CONSIDERATIONS

Based on this feedback, the following considerations should inform the design:

1. PRIORITISE PEOPLE WHILE RETAINING ACCESS AND NECESSARY PARKING

- Maintain a people-centred approach with flexible multi-use public space, but see that the design approach allows for adequate parking to be retained, particularly those with mobility needs. To encourage the reduction in car parking in the village, pedestrian movement between the village and the Salthill car park located on the promenade should be prioritised.

2. DESIGN FOR COMFORT, CLIMATE AND ALL-DAY USE

- Use sunlight and shade patterns to inform the placement of the public realm, including its seating. Ensure the space provides adequate weather protection through shelters and tree planting.

3. STRENGTHEN VISUAL COHERENCE AND LOCAL IDENTITY

- Consider design guidance for shopfronts, signage and public realm elements that reinforces a cohesive, high-quality village feel. Ensure new elements feel locally rooted and contribute to a distinct sense of place.

3. FURTHER REPRESENTATIONS

Following the charrette and drop-in, a small number of representations were submitted to Galway City Council. These are summarised as follows:

GALWAY CITY COMMUNITY NETWORK

GCCN provided a written statement on behalf of its membership. Key points included:

- Support for the prioritisation of pedestrians and cycling infrastructure, alongside reference to the hierarchy of road users.
- Support for the reduction in speed limit to 20 kmph on Salthill Upper Road, the replacement of roundabouts and introduction of pedestrian crossings. GCCN encouraged consideration of raised table accessible zebra crossings, a maximum of 50m apart.
- Encouragement for public transport improvements.
- Recommendations for application of best practice solutions in relation to 2-way cycle provision.
- Feedback on car parking - encouraging reduced parking intensity and potential relocation of different parking “types” (e.g. disabled / older-person parking to match the location of particular uses.
- Consideration of Universal Accessibility principles. Support for facilities being “affordable, accessible and available”.
- Incorporation of enhanced amenities for teenagers and engagement of youth organisations.
- Support for a cycle hub and tidal pool reinstatement. Encouragement of more public toilets, showers and bicycle parking. Feedback also encouraged the provision of non-commercial spaces, including a community facility.
- Encouragement for more explicit reference to the climate emergency with associated initiatives to support zero waste, climate justice, circular economy and opportunities for collaborative planning.
- Support for improvements to public green spaces including nature-based flood defences. Water quality was also highlighted as being important.

NBS INNOVATION HUB

An individual from the University of Galway made a submission in support of a Nature-based Solutions (NbS) Innovation Hub.

The purpose of the project is to bring together “enablers of transformational societal change” including local and expert knowledges, experimentation, technology, training, and people.

The project would include the training of stakeholders and the public in the basics of climate adaptation on the coast. This will enable participants to take action, through collaborative citizen science-based local initiatives.

It buildings on existing sites in Galway, training programmes and networks which are already established.

The submission indicates that the old tourist office in Salthill would be suitable as a start-up hub, potentially through PEACE funding. The submission indicates that the building could be retained and retrofitted, working in partnership with Galway City Council. A funding application for £9m has been successful which allocates a €100,000 budget for the co-design of the Salthill tourist office site.

SOCIAL FACTORY

A member of the public submitted an information booklet which explained the concept of a new dynamic multidisciplinary third space in a city centre location, potentially in Salthill.

Social Factory would be a Social Enterprise that aims to encourage people to socialise through sports, arts and entrepreneurship within an educational environment. This could help to address social isolation, loneliness and mental wellbeing.

COASTAL SCULPTURES

A member of the public suggested that the skilled stone sculptures along the length of the prom in Caorle in Italy would be an interesting precedent for Salthill, with potential to link into local artistic creativity.

4. NEXT STEPS

The charrette process demonstrated a strong level of support for the emerging concepts.

The engagement process will help to develop a shared vision for Salthill which embraces the key themes and principles identified through the charrette.

In addition, the write-up has enabled the preparation of a concise list of “design considerations” for each concept. This will assist with the refinement of concepts to inform the final strategies and project proposals.





